



**HandY**  
— SURGICAL —



**SMILE**  
**DELIVERED**

# About Handy Surgical

## **Welcome to Handy Surgical!**

Your Trusted Partner in Precision Dental Instruments.

At Handy Surgical, we take pride in being a distinguished manufacturer, exporter, and wholesaler of high-quality dental instruments based in the vibrant city of Hong Kong. With a commitment to precision, innovation, and customer satisfaction, we have become a trusted name in the dental industry, serving dental professionals and institutions around the globe.

## **Our Commitment to Excellence**

At the heart of Handy Surgical is a dedication to excellence. We understand the critical role that precision instruments play in the field of dentistry, and we strive to meet and exceed the expectations of our customers. Our team of skilled craftsmen and engineers meticulously design and manufacture each instrument to ensure optimal performance, durability, and user satisfaction. Every instrument we create is a testament to our unwavering commitment to quality and precision.

## **Why Choose Handy Surgical?**

- **Precision and Quality:** Our instruments are crafted with the utmost attention to detail, ensuring precision and reliability for dental procedures.
- **Innovation:** We continually invest in research and development to integrate the latest advancements in technology with traditional craftsmanship.
- **Customer Satisfaction:** Our commitment to our customers goes beyond providing high-quality instruments. We aim to build lasting relationships by offering exceptional customer service and support.
- **Global Reach:** Serving dental professionals and institutions worldwide, we understand the diverse needs of our clients and cater to them with tailored solutions.

# Vision Statement

Combining traditional craftsmanship with modern technology to create high-quality, precise, and personalized tools for medical and dental professionals.

# Mission Statement

Empower dental and medical professionals with the tools they need to deliver optimal health care and enhance the well-being of their patients.



# Table of Contents

## DIAGNOSTICS

01

MICRO SURGICAL MIRRORS  
MIRROR HANDLE WITH TOP  
PROBES  
TWEEZERS

Page 06-10

## IMPLANTOLOGY

02

BONE MILL  
BONE SCRAPER  
CALIPERS  
DRILLS  
HAND INSTRUMENTS  
IMPLANT INSTRUMENT KITS  
OSTEOTOMES BONE CHISEL & MALLETS  
OSTEOTOMES BONE CHISEL STRAIGHT 7.5mm  
OSTEOTOMES CONCAVE  
OSTEOTOMES CONVEX  
OSTEOTOMES FLAT ANGULATED  
OSTEOTOMES FLAT STRAIGHT  
SINUS LIFT INSTRUMENTS  
TISSUE PUNCH

Page 12-23

## MICRO SURGERY

03

MICRO SURGERY INSTRUMENTS  
MICRO TISSUE FORCEP

Page 25-26

## NEW ARRIVAL

04

AIR ROTOR HAND PIECES  
DENTAL STUDY MODEL  
MICRO MOTOR HAND PIECES

Page 27-30

## ENDODONTIC

05

AMALGAM CARRIER  
ART INSTRUMENTS  
BURNISHER  
CARVER  
CHISELS & HOE  
COMPOSITE INSTRUMENTS ANTERIOR & POSTERIOR BLACK  
COMPOSITE INSTRUMENTS ANTERIOR & POSTERIOR BLUE  
COMPOSITE INSTRUMENTS GOLD FLEXI THIN  
COMPOSITE INSTRUMENTS TITANIUM BLUE  
COMPOSITE INSTRUMENTS TITANIUM GOLD  
MARGIN TRIMMER  
MATRIX RETAINER  
PLACEMENT INSTRUMENTS

Page 31-61

## INSTRUMENTS MANAGEMENT SYSTEM

06

Page 62-67

## ORAL SURGERY

08

EXTRACTION FORCEPS STANDARD  
EXTRACTION FORCEPS PREMIUM  
EXTRACTION FORCEPS ERGONOMIC  
EXTRACTION FORCEPS SECURE  
EXTRACTION FORCEPS ATRAUMATIC  
EXTRACTION FORCEPS PEEDO PREMIUM  
ROOT ELEVATOR STANDARD  
ROOT ELEVATOR PREMIUM  
ROOT ELEVATOR LINDO LEVIAN  
BONE RONGEURS  
SCISSORS  
TUNGSTEN CARBIDE SCISSOR & NEEDLE HOLDER  
HEMOSTATS & NEEDLE HOLDERS  
TOWEL CLAMPS, DRESSING & STERILISING FORCEPS  
ALLIS & TISSUE FORCEPS

Page 71-124

PLASTIC FILLING INSTRUMENTS  
RCT PLUGGER  
RCT SPREADERS & HEAT CARRIERS  
ROOT FRAGMENT STEIGLITZ  
RUBBER DAM CLAMP  
RUBBER DAM FORCEP AND PUNCH  
RUBBER DAM FRAME  
SPOON EXCAVATOR

## LUXATIP

Page 69-70

METAL & FRAZIER SUCTION TUBE  
BONE CHISEL & MALLETS  
SCALPEL HANDLES  
CHEEK RETRACTORS & TISSUE RETRACTORS  
PERIOSTEAL ELEVATOR & BONE FILE  
DENTAL SYRINGE  
ASSORTED SURGICAL KITS  
NEW CLINIC SET UP KITS  
PROXITIP - LUXATING HYBRIDS  
EXTRACTION FORCEPS PREMIUM #BLACK  
RETRACTOR  
EXTRACTION FORCEPS PEEDO STANDARD  
EXTRACTION FORCEPS AMERICAN PATTERN

# Table of Contents

## ORTHODONTICS

09

HAND INSTRUMENTS  
ORTHODONTICS CUTTERS TC  
ORTHODONTICS PLIERS  
ORTHODONTICS PLIERS TC  
PLASMA COATED ORTHODONTIC BLACK CUTTER

Page 125 - 136

## PERIODONTAL

10

COLUMBIA CURETTES  
CORN SUTURE PLIER & POCKET MARKER  
GRACEY CURETTE  
GRACEY CURETTE COLOR CODED  
LANGER CURTTES  
MC CALL CURETTES  
PERIO INSTRUMENT KITS  
PERIO PROBES  
PERIODONTAL CHISEL  
PERIODONTAL FILES  
PERIODONTAL KNIVES  
PERIODONTAL SCALERS  
PERIOTOMES  
SUB GINGIVAL SCALER  
SUPRA GINGIVAL SCALER  
SURGICAL CURETTE & BONE CURETTE  
TISSUE NIPPER & BLADE HOLDER  
TUNNELLING KNIVES  
VISTA TUNNELING PROCEDURE

Page 137 - 162

## PROSTHODONTIC

11

ANTERIOR AND POSTERIOR & ADJUSTABLE  
ARTICULATING PAPER HOLDER & CROWN HOLDING FORCEP  
ARTICULATOR  
CALIPER IWANSON  
CEMENT SPATULA & HIDEMANN SPATULA  
CROWN REMOVER  
GINGIVAL CORD PACKER  
IMPRESSION TRAY DENTULOUS NON-PERFORATED  
IMPRESSION TRAY DENTULOUS PERFORATED  
IMPRESSION TRAY DENTULOUS PERFORATED PEEDO  
IMPRESSION TRAY EDENTULOUS NON-PERFORATED  
IMPRESSION TRAY EDENTULOUS PERFORATED  
IMPRESSION TRAY HALF  
PKT CARVERS  
PKT CARVERS COLOR CODED  
PROSTHODONTIC INSTRUMENT KITS  
WAX & MODELLING CARVER  
WAX KNIVES & SPATULA

Page 163-181

# Diagnosics

01



# MICRO SURGICAL MIRRORS



DOUBLE SIDED MIRROR FRONT SURFACE  
HS-101



DOUBLE SIDED MIRROR FRONT SURFACE  
HS-104



MICRO SURGICAL MIRROR ROUND SMALL  
HS-105

MICRO SURGICAL RECTANGULAR MIRROR



MICRO SURGICAL MIRROR ROUND LARGE  
HS-102



MICRO SURGICAL MIRROR ROUND SMALL  
HS-103

MICRO SURGICAL RECTANGULAR MIRROR



No.1  
HS-106



No.2  
HS-107



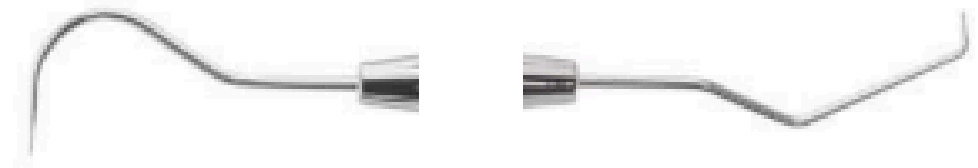
No.3  
HS-108

# PROBES



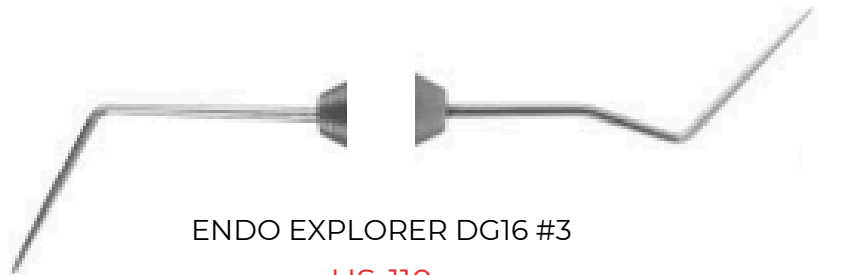
ENDO EXPLORER DG16 # 7

HS-109



EXPLORER D E EXD5 #4

HS-112



ENDO EXPLORER DG16 #3

HS-110



EXPLORER S E EXS11

HS-113



EXPLORER D E EXD5 #1

HS-111



EXPLORER S E EXS23

HS-114



# PROBES



EXPLORER WITH PCP11.5B # 6

HS-115



SINGLE END PROBE EXS6L

HS-116



SINGLE END PROBE EXS6XL #4

HS-117



SINGLE END PROBE EXS5

HS-118



SINGLE END PROBE EXS6

HS-119

# TWEEZERS



GP HOLDING  
PREMIUM  
HS-120



GP HOLDING  
STANDARD  
HS-121



LOCKING  
PREMIUM  
HS-122



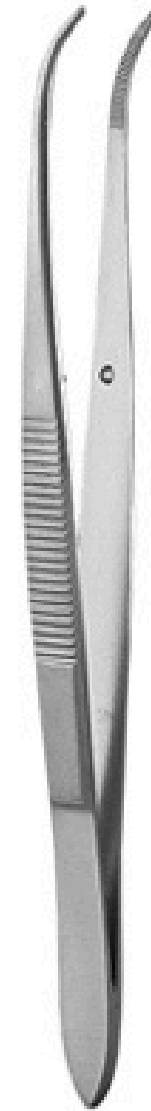
LOCKING  
PREMIUM  
HS-123



MARIAM  
HS-124



MARIAM  
PREMIUM  
HS-125



PERRY  
HS-126



SELF LOCKING  
STANDARD  
HS-127

# Implantology

02



# BONE MILL



BONE CRACKER FOR  
LARGE BONE PIECES  
HS-128



BONE CRUSHER  
SILICON  
HS-129



BONE MILL  
HS-130

# BONE SCRAPER



BONE SCRAPER  
BLADE CURVED  
HS-131



BONE SCRAPER  
BLADE STRAIGHT  
HS-132



BONE SCRAPER  
BLADE STRAIGHT  
HS-133



BONE CRACKER FOR  
LARGE BONE PIECES  
HS-134

# CALIPERS



BONE CALIPER  
BC15  
HS-135



BONE CALIPER  
BC35  
HS-136



CASTROVIEJO CALIPER  
LARGE CURVED  
HS-137



CASTROVIEJO CALIPER  
LARGE STRAIGHT  
HS-138



CASTROVIEJO CALIPER  
SMALL STRAIGHT  
HS-139



CASTROVIEJO CALIPER  
SMALL CURVED  
HS-140

# DRILLS



DRILL KIT  
HS-141

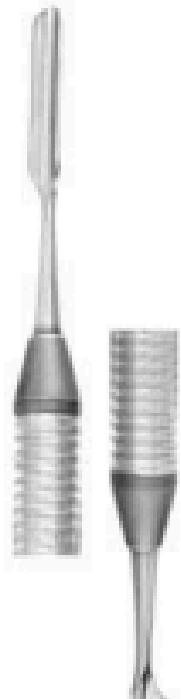


TREPHINE KIT  
HS-142

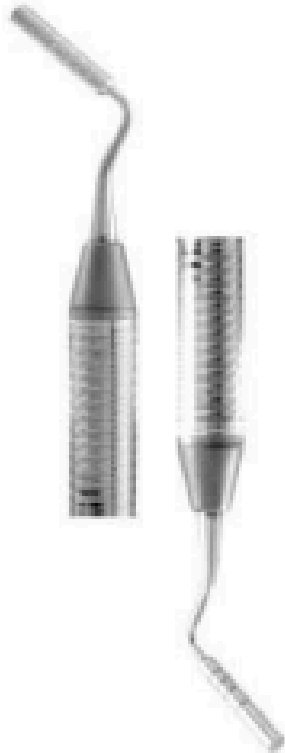
# HAND INSTRUMENTS



BONE COMPACTOR &  
CARRIER  
HS-143



BONE GRAFT CARRIER  
HS-144



BONE GRAFT  
CONDENSOR  
HS-145



DEPTH PROBE 1.2 MM  
HS-146



MEMBRANE PLACEMENT  
HS-147



UNIVERSAL RATCHET  
WRENCH  
HS-148

# IMPLANT INSTRUMENT KITS



BASIC IMPLANT SURGERY  
WITH CASSETEE

HS-149



SINUS LIFTING  
INSTRUMENTS IN POUCH

HS-150

# OSTEOTOMES BONE CHISEL & MALLETS



BONE PUNCH 4MM  
HS-151



BONE PUNCH 7MM  
HS-152



OSTEOTOMES BONE  
CHISEL CURVED 4mm  
HS-153



OSTEOTOMES BONE  
CHISEL CURVED 7.5mm  
HS-154



OSTEOTOMES BONE  
CHISEL STRAIGHT 4mm  
HS-155



OSTEOTOMES BONE  
CHISEL STRAIGHT 7.5mm  
HS-156



# OSTEOTOMES BONE CHISEL



BONE COLLECTOR  
#BC1331 1  
HS-157



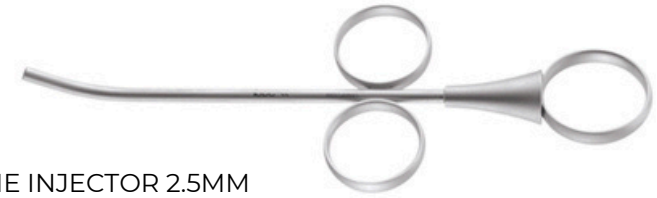
BONE COLLECTOR  
#BC1331  
HS-159



BONE COLLECTOR  
FILTER 7mm  
HS-162



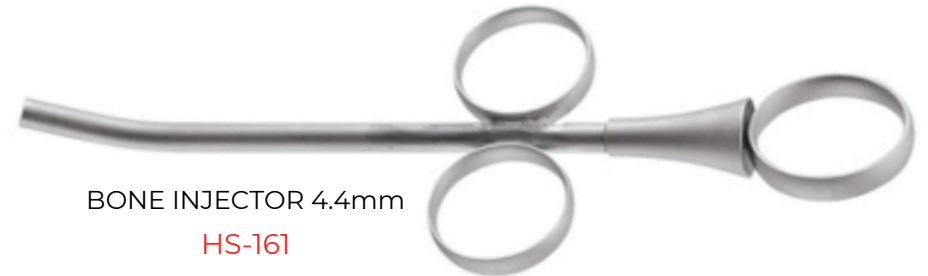
BONE COLLECTOR  
FILTER 12mm  
HS-163



BONE INJECTOR 2.5MM  
HS-158



BONE INJECTOR 3.5mm  
HS-160



BONE INJECTOR 4.4mm  
HS-161

# OSTEOTOMES CONCAVE



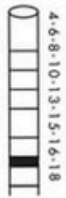
OSTEOTOMES CONCAVE  
2.2 – 2.7  
HS-164



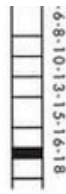
OSTEOTOMES CONCAVE  
2.7 – 3.2  
HS-165



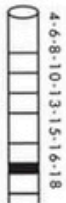
OSTEOTOMES CONCAVE  
3.2 – 3.7  
HS-166



OSTEOTOMES CONCAVE  
3.7 – 4.2  
HS-167



OSTEOTOMES CONCAVE  
4.2 – 4.7  
HS-168



OSTEOTOMES CONCAVE  
4.7 – 5.0  
HS-169

# OSTEOTOMES CONVEX



OSTEOTOMES CONVEX  
2.2 – 2.7  
HS-170



OSTEOTOMES CONVEX  
2.7 – 3.2  
HS-171



OSTEOTOMES CONVEX  
3.2 – 3.7  
HS-172



OSTEOTOMES CONVEX  
3.7 – 4.  
HS-173



OSTEOTOMES CONVEX  
3.7 – 4.  
HS-174

# OSTEOTOMES FLAT ANGULATED



OSTEOTOMES FLAT  
CURVED 2.2 – 2.7  
HS-175



OSTEOTOMES FLAT  
CURVED 2.7 – 3.2  
HS-176



OSTEOTOMES FLAT  
CURVED 3.2 – 3.7  
HS-177



OSTEOTOMES FLAT  
CURVED 3.7 – 4.2  
HS-178



OSTEOTOMES FLAT  
CURVED 4.2 – 4.7  
HS-179

OSTEOTOMES FLAT  
CURVED 4.7 – 5.4  
HS-180



# OSTEOTOMES FLAT STRAIGHT



OSTEOTOMES FLAT  
STRAIGHT 2.2 – 2.7  
HS-181



OSTEOTOMES FLAT  
STRAIGHT 3.7 – 4.2  
HS-184



OSTEOTOMES FLAT  
STRAIGHT 2.7 – 3.2  
HS-182



OSTEOTOMES FLAT  
STRAIGHT 4.2 – 4.7  
HS-185



OSTEOTOMES FLAT  
STRAIGHT 3.2 – 3.7  
HS-183



OSTEOTOMES FLAT  
STRAIGHT 4.7 – 5.4  
HS-186

# SINUS LIFT INSTRUMENTS



SINUS LIFT INSTRUMENT  
HOLLOW HANDLE NO. 1  
HS-187



SINUS LIFT INSTRUMENT  
HOLLOW HANDLE NO. 2  
HS-188



SINUS LIFT INSTRUMENT  
HOLLOW HANDLE NO. 3  
HS-189



SINUS LIFT INSTRUMENT  
HOLLOW HANDLE NO. 4  
HS-190



SINUS LIFT INSTRUMENT  
HOLLOW HANDLE NO. 5  
HS-191



SINUS LIFT INSTRUMENT  
HOLLOW HANDLE NO. 6  
HS-192



SINUS LIFT INSTRUMENT  
HOLLOW HANDLE NO. 7  
HS-193



SINUS LIFT INSTRUMENT  
HOLLOW HANDLE NO. 8  
HS-194



SINUS LIFT INSTRUMENT  
HOLLOW HANDLE NO. 9  
HS-195

# TISSUE PUNCH



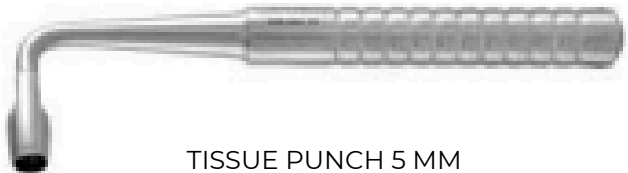
TISSUE PUNCH 4 MM  
CURVED #TPC4

HS-196



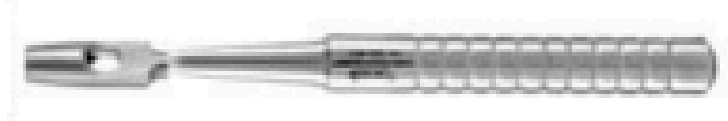
TISSUE PUNCH 4 MM  
STRAIGHT #TPS4

HS-197



TISSUE PUNCH 5 MM  
CURVED #TPC5

HS-198



TISSUE PUNCH 5 MM  
STRAIGHT #TPS5

HS-199



TISSUE PUNCH 6 MM  
CURVED #TPC6

HS-200



TISSUE PUNCH 6 MM  
CURVED #TPC6

HS-201

# Micro Surgery

03





# MICRO SURGERY INSTRUMENTS



MICRO SCALPEL  
HANDLE  
HS-202



MICRO TISSUE  
FORCEP.  
HS-203



MICRO TISSUE  
FORCEP  
HS-204



PAPILA ELEVATOR  
HS-205

# MICRO TISSUE FORCEP



GERALD TISSUE FORCEP  
18 CM CURVED  
HS-206



GERALD TISSUE FORCEPS  
CURVED SERRATED 18 CM  
HS-207



GERALD TISSUE FORCEPS  
STRAIGHT (12) 18 CM  
HS-208



GERALD TISSUE FORCEPS  
STRAIGHT SERRATED 18 CM  
HS-209



MICRO TISSUE FORCEP  
#TPSLCOSM  
HS-210

New Arrival

04



# AIR ROTOR HAND PIECES



STANDARD HEAD HIGH  
SPEED PUSH BUTTON LED  
HS-211



STANDARD HEAD HIGH SPEED  
PUSH BUTTON  
HS-212



STANDARD HEAD HIGH SPEED  
WRENCH TYPE  
HS-213



SUPER TORQUE HIGH SPEED  
PUSH BUTTON  
HS-214



SUPER TORQUE  
WRENCH TYPE  
HS-215

# DENTAL STUDY MODEL



C-TYPE STUDY MODEL  
HS-216



N TYPE STUDY MODEL  
HS-217

# MICRO MOTOR HAND PIECES



CONTRA HAND-PIECE LOW SPEED  
HS-218



STRAIGHT HAND PIECE LOWSPEED  
HS-219

# Enddotonic

05



# AMALGAM CARRIER



AMALGAM CARRIER  
#AC504  
HS-220



AMALGAM CARRIER  
JUMBO REGULAR  
HS-221



AMALGAM CARRIER  
LARGE REGULAR  
HS-222

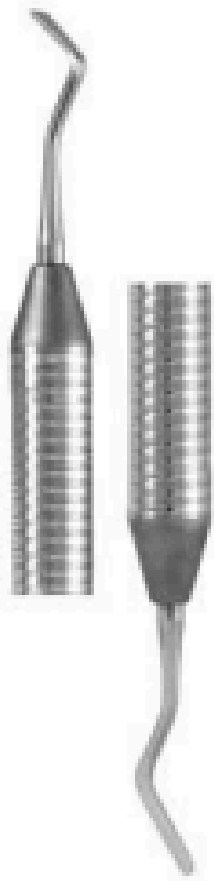


AMALGAM CARRIER  
MINI REGULAR AC5201  
HS-223

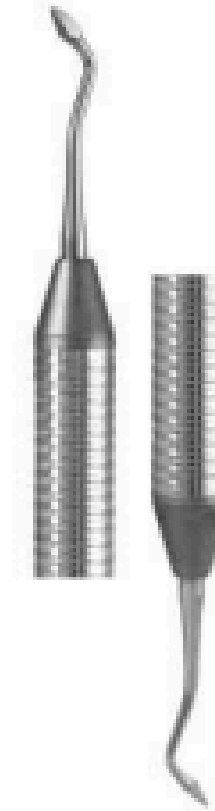


AMALGAM WELL  
HS-224





ART INSTRUMENT  
HS-225



ART PYRAMIDAL SCRAPER  
HS-226

# BURNISHER



BALL BURNISHER BIG  
#RING HANDLE

HS-227



BALL BURNISHER BIG #STANDARD

HS-228



BALL BURNISHER SMALL #RING HANDLE

HS-229



BALL BURNISHER SMALL #STANDARD

HS-230



EGG BURNISHER #RING HANDLE

HS-231



EGG BURNISHER #STANDARD

HS-232



T-BURNISHER DOUBLE  
ENDED TB2 #2

HS-239



LADMORE BURNISHER

HS-233



T-BURNISHER DOUBLE ENDED

HS-234



WESTCOTT BURNISHER  
#RING HANDLE BB21 #4

HS-235



WESTCOTT BURNISHER #RING  
HANDLE

HS-236



WESTCOTT BURNISHER  
#STANDARD BB21 #3

HS-237



WESTCOTT BURNISHER #STANDARD

HS-238

# CARVER



DIAMOND SHAPE  
FRAHM # CVFR2 3H  
HS-240



DIAMOND SHAPE  
FRAHM #CVFR2 3  
HS-241



DIAMOND SHAPE  
FRAHM #CVFR2 3H #4  
HS-242



DISCOID-CLEOID  
CARVER #CD89 92  
HS-243



DISCOID-CLEOID CARVER  
#RING HANDLE  
HS-244



DISCOID-CLEOID  
CARVER #STANDARD  
HS-245



HOLLENBACK CARVER  
#RING HANDLE  
HS-252



HOLLENBACK CARVER  
#STANDARD  
HS-246



INTERPOXIMAL OFF-  
ANGLE  
HS-247



WALL CARVER #RING  
HANDLE  
HS-248



WALL CARVER  
#STANDARD  
HS-249



WARD'S CARVER #RING  
HANDLE  
HS-250

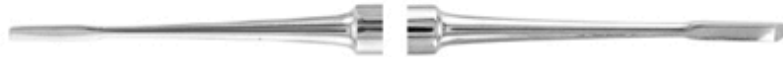


WARD'S CARVER  
#STANDARD  
HS-251

# CHISELS & HOE



ENAMEL CHISEL #RING HANDLE  
(8MM)  
HS-253



ENAMEL CHISEL D E # 3  
HS-254



ENAMEL CHISEL S E  
(2MM)  
HS-255



ENAMEL CHISEL S E  
(4MM)  
HS-256



MARGIN TRIMMER CHISEL  
(1MM)  
HS-257



MARGIN TRIMMER CHISEL  
(3MM)  
HS-258



MARGIN TRIMMER HATCHET CP5  
3 #3  
HS-259



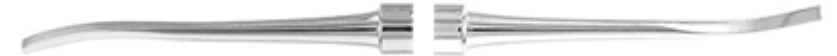
MARGIN TRIMMER  
HATCHET.  
HS-265



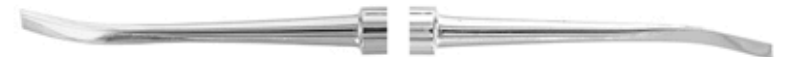
MARGIN TRIMMER  
HATCHET  
HS-260



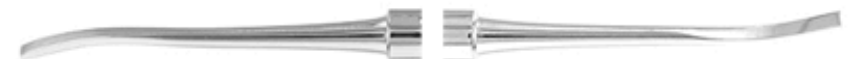
MARGIN TRIMMER HOE #RING  
HANDLE  
HS-261



WEDELSTADT CHISEL #  
CP3 4  
HS-262



WEDELSTADT CHISEL  
#CP5 6  
HS-263



WEDELSTADT CHISEL TG  
SMALL#CP1 2  
HS-264

# COMPOSITE INSTRUMENTS ANTERIOR & POSTERIOR BLACK



COMPOSITE INSTRUMENT ANTERIOR  
BLACK #TNCIGFT3

HS-266



COMPOSITE INSTRUMENT POSTERIOR BLACK  
#TNCFIM L

HS-271



COMPOSITE INSTRUMENT ANTERIOR  
BLACK #TNCIGFTMI1

HS-267



COMPOSITE INSTRUMENT POSTERIOR BLACK  
#TNCFIS M

HS-272



COMPOSITE INSTRUMENT ANTERIOR  
BLACK #TNCIPCL

HS-268



COMPOSITE INSTRUMENT POSTERIOR BLACK  
#TNPLG5A

HS-273



COMPOSITE INSTRUMENT ANTERIOR  
BLACK #TNCIPCM

HS-269



COMPOSITE INSTRUMENT  
POSTERIOR BLACK #TNPLGH3

HS-274



COMPOSITE INSTRUMENT ANTERIOR  
BLACK #TNCIPCS

HS-270



COMPOSITE INSTRUMENT  
POSTERIOR BLACK #TNPLGOT

HS-275

# COMPOSITE INSTRUMENTS ANTERIOR & POSTERIOR BLUE



COMPOSITE INSTRUMENT ANTERIOR BLUE #TNCIGFT3 # B

HS-276



COMPOSITE INSTRUMENT POSTERIOR BLUE #TNCFIML #B

HS-281



COMPOSITE INSTRUMENT ANTERIOR BLUE #TNCIGFTM11 # B

HS-277



COMPOSITE INSTRUMENT POSTERIOR BLUE #TNCFISM #B

HS-282



COMPOSITE INSTRUMENT ANTERIOR BLUE #TNCIPCL # B

HS-278



COMPOSITE INSTRUMENT POSTERIOR BLUE #TNPLG5A #B

HS-283



COMPOSITE INSTRUMENT ANTERIOR BLUE #TNCIPCM # B

HS-279



COMPOSITE INSTRUMENT POSTERIOR BLUE #TNPLGH3 #B

HS-284



COMPOSITE INSTRUMENT ANTERIOR BLUE #TNCIPCS # B

HS-280



COMPOSITE INSTRUMENT POSTERIOR BLUE #TNPLGOT #B

HS-285

# COMPOSITE INSTRUMENTS GOLD FLEXI THIN



COMPOSITE INSTRUMENT GOLD FLEXI THIN  
#CIGFT1  
HS-286



COMPOSITE INSTRUMENT GOLD FLEXI THIN  
#CIGFT2  
HS-287



COMPOSITE INSTRUMENT GOLD FLEXI THIN  
#CIGFT3  
HS-288



COMPOSITE INSTRUMENT GOLD FLEXI THIN  
#CIGFT4  
HS-289



COMPOSITE INSTRUMENT GOLD FLEXI THIN #CIGFTMINI1  
HS-290

# COMPOSITE INSTRUMENTS TITANIUM BLUE



COMPOSITE INSTRUMENT TITANIUM BLUE #6 CIB1 #6

HS-300



COMPOSITE INSTRUMENT TITANIUM BLUE #6 CIB2 #6

HS-301



COMPOSITE INSTRUMENT TITANIUM BLUE #6 CIB3 #6

HS-302



COMPOSITE INSTRUMENT TITANIUM BLUE #6 CIB5 #6

HS-303



COMPOSITE INSTRUMENT TITANIUM BLUE #6 CIB6 #6

HS-304



COMPOSITE INSTRUMENT TITANIUM BLUE #6

HS-305



# COMPOSITE INSTRUMENTS TITANIUM GOLD



COMPOSITE INSTRUMENT TITANIUM GOLD #6 CIG1 #6

HS-306



COMPOSITE INSTRUMENT TITANIUM GOLD #6 CIG2 #6

HS-307



COMPOSITE INSTRUMENT TITANIUM GOLD #6 CIG4 #6

HS-308



COMPOSITE INSTRUMENT TITANIUM GOLD #6 CIG5 #6

HS-309



COMPOSITE INSTRUMENT TITANIUM GOLD #6 CIG6 #6

HS-310



COMPOSITE INSTRUMENT TITANIUM GOLD #6

HS-311

# MARGIN TRIMMER



MARGIN TRIMMER  
#PREMIUM #MT29H

HS-312



MARGIN TRIMMER #STANDARD  
#MT29H

HS-313



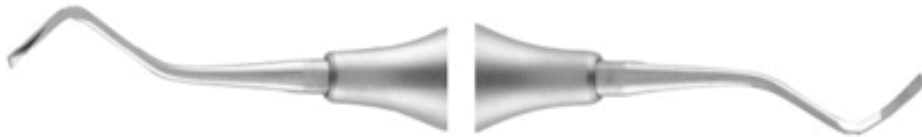
MARGIN TRIMMER #RING  
HANDLE #MT28H

HS-314



MARGIN TRIMMER PREMIUM  
#MT26H

HS-315



MARGIN TRIMMER #RING  
HANDLE #MT29H

HS-316



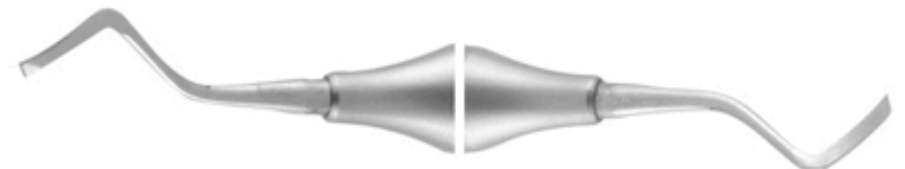
MARGIN TRIMMER PREMIUM  
#MT28H

HS-317



MARGIN TRIMMER  
#STANDARD #MT28H

HS-318



MARGIN TRIMMER  
PREMIUM #MT27H

HS-319

# MATRIX RETAINER



MATRIX RETAINER IVORY

HS-320



MATRIX RETAINER SQUIVLAND  
#NARROW

HS-321



MATRIX RETAINER SQUIVLAND  
#WIDE

HS-322



TOFFLEMIRE UNIVERSAL

HS-323

# PLACEMENT INSTRUMENTS



PLACEMENT INSTRUMENT  
#PICH6  
HS-324



PLACEMENT INSTRUMENT  
#PICH7  
HS-325



PLACEMENT INSTRUMENT  
#PICH8  
HS-326



PLACEMENT INSTRUMENT  
#SP60616  
HS-327

# PLASTIC FILLING INSTRUMENTS



PARALLELOGRAM CONDENSOR #SOLID RING  
HANDLE

HS-328



PARALLELOGRAM CONDENSOR  
#STANDARD

HS-329



PLASTIC FILLING INSTRUMENT #HOLLOW  
HANDLE PF21 #4

HS-330



PLASTIC FILLING INST. # PF13 # 3

HS-331



PLASTIC FILLING INSTRUMENT #HOLLOW  
HANDLE

HS-332

# PLASTIC FILLING INSTRUMENTS



PLASTIC FILLING INSTRUMENT  
#PFGFT1

HS-333



PLASTIC FILLING INSTRUMENT  
#PFGFT2

HS-334



PLASTIC FILLING INSTRUMENT  
#PFI1

HS-335



PLASTIC FILLING  
INSTRUMENT #PFI2

HS-336



PLASTIC FILLING INSTRUMENT #STANDARD  
PF2 #3

HS-337



PLASTIC FILLING INSTRUMENT  
#STANDARD

HS-338

# RCT PLUGGER



ROOT CANAL LUKS #RCPLCC2

HS-339



ROOT CANAL LUKS #RCPLCC1

HS-340



ROOT CANAL LUKS #RCPLCC3

HS-341



ROOT CANAL LUKS  
#RCPLCC4

HS-342



ROOT CANAL PLUGGER # RCPC13

HS-343



ROOT CANAL PLUGGER #LUKS  
#STANDARD #RCPL1 #RCPL1

HS-344



ROOT CANAL PLUGGER #LUKS  
#STANDARD #RCPL1 #RCPL3

HS-345



ROOT CANAL PLUGGER #LUKS  
#STANDARD #RCPL1 #RCPL4

HS-346



ROOT CANAL  
PLUGGER #LUKS  
#STANDARD #RCPL1

HS-347



ROOT CANAL PLUGGER  
#RCPC57

HS-348



ROOT CANAL  
PLUGGER #RCPC911

HS-349



ROOT CANAL  
PLUGGER #RCPC30

HS-350

# RCT PLUGGER



ROOT CANAL  
PLUGGER #RCPCC50  
HS-351

ROOT CANAL  
PLUGGER #RCPCC40  
HS-352

ROOT CANAL  
PLUGGER #RCPCC60  
HS-353

ROOT CANAL PLUGGER  
#STANDARD #RCP30 #RCP30  
HS-354

ROOT CANAL PLUGGER  
#STANDARD #RCP30 #RCP30  
HS-355



ROOT CANAL PLUGGER  
#STANDARD #RCP30  
HS-356

ROOT CANAL PLUGGER  
#STANDARD RCP1 3.  
HS-357

ROOT CANAL PLUGGER  
#STANDARD RCP1 3  
HS-358

ROOT CANAL PLUGGER  
#STANDARD RCP5 7  
HS-359

ROOT CANAL PLUGGER  
#STANDARD RCP9 11  
HS-360



# RCT SPREADERS & HEAT CARRIERS



ROOT CANAL SPREADER  
# RCSDCC11TS  
HS-361



ROOT CANAL SPREADER  
#RCSDCC11  
HS-362



ROOT CANAL SPREADER  
#RCSDCC11S  
HS-363



ROOT CANAL SPREADER  
#RCSDCC11T  
HS-364



ROOT CANAL  
SPREADER #RCSGPCC1  
HS-365



ROOT CANAL SPREADER  
#RCSGPCC2  
HS-366



ROOT CANAL SPREADER  
#RCSGPCC3  
HS-367



ROOT CANAL SPREADER  
#RCSMACC57  
HS-368

# RCT SPREADERS & HEAT CARRIERS



ROOT CANAL SPREADER  
#STANDARD #RCS D11

HS-369



ROOT CANAL SPREADER  
#STANDARD #RCS D11S

HS-370



ROOT CANAL SPREADER  
#STANDARD #RCS D11T

HS-371



ROOT CANAL SPREADER  
#STANDARD #RCS D11TS

HS-372



ROOT CANAL SPREADER  
#STANDARD #RCS GP1

HS-373



ROOT CANAL SPREADER  
#STANDARD #RCS GP2

HS-374



ROOT CANAL SPREADER  
#STANDARD #RCS GP3

HS-375



ROOT CANAL SPREADER  
#STANDARD #RCS MA57

HS-376

# ROOT FRAGMENT STEIGLITZ



NERVE-CANAL PLIER  
CURVED

HS-377



ROOT FRAGMENT  
#RF90°

HS-378



ROOT FRAGMENT  
#RF90°

HS-379



ROOT FRAGMENT  
#RF45°

HS-380



ROOT FRAGMENT  
STRAIGHT

HS-381

# RUBBER DAM CLAMP



DEEPLY FESTOONED JAWS FOR  
PARTIALLY INTERRUPTED

HS-382



DEEPLY FESTOONED JAWS FOR  
PARTIALLY INTERRUPTED

HS-383



LEFT MANDIBULAR MOLAR CLAMP  
WITH SERRATED JAW

HS-384



LEFT MANDIBULAR MOLAR CLAMP  
WITH SERRATED JAW

HS-385



RIGHT MANDIBULAR MOLAR  
CLAMP WITH SERRATED JAWS

HS-386



RIGHT MANDIBULAR MOLAR CLAMP  
WITH SERRATED JAWS

HS-387



RUBBER DAM CLAMPS  
# BLACK LINE

HS-388



RUBBER DAM CLAMP  
PEEDO #RDCA1

HS-389

# RUBBER DAM CLAMP



RUBBER DAM CLAMP PEEDO  
#RDCA2

HS-390



RUBBER DAM CLAMP PEEDO  
#RDCA3

HS-391



RUBBER DAM CLAMP PEEDO  
#RDCA4

HS-392



RUBBER DAM CLAMP PEEDO  
#RDCA5

HS-393



RUBBER DAM CLAMP PEEDO  
#RDCA6

HS-394



RUBBER DAM CLAMPS  
# BLACK LINE

HS-395



SLIGHTLY FESTOONED JAWS  
FOR LARGE MAXILLARY MOLARS

HS-396



SLIGHTLY FESTOONED JAWS FOR  
LARGE MAXILLARY MOLARS

HS-397



SLIGHTLY FESTOONED JAWS FOR  
MAXILLARY MOLAR RDCB201

HS-398



SLIGHTLY FESTOONED JAWS  
FOR MAXILLARY MOLAR

HS-399

# RUBBER DAM CLAMP



SMALL MANDIBULAR  
MOLAR CLAMP

HS-400



SMALL MAXILLARY  
MOLAR CLAMP

HS-401



UNIVERSAL DOUBLE BOWLED  
ANTERIOR CLAMP

HS-402



UNIVERSAL DOUBLE BOWLED  
ANTERIOR CLAMP

HS-403



UNIVERSAL DOUBLE-BOWED  
ANTERIOR CLAMP

HS-404



UNIVERSAL DOUBLE-BOWED  
ANTERIOR CLAMP

HS-405



UNIVERSAL MAXILLARY  
BICUSPID CLAMPS

HS-406



UNIVERSAL MOLAR  
CLAMP

HS-407

# RUBBER DAM FORCEP AND PUNCH



MATRIX RING HOLDING  
FORCEP 17CM

HS-408



COMPOSITE INSTRUMENTS  
SILICON BLUE #8

HS-409



RUBBER DAM  
FORCEP #IVORY

HS-410



RUBBER DAM FORCEP  
#STOKE

HS-411



RUBBER DAM  
PUNCH # IVORY

HS-412



RUBBER DAM PUNCH  
#AINSWORTH

HS-413

# RUBBER DAM FRAME



RUBBER DAM FRAME  
# PLASTIC  
HS-414



RUBBER DAM FRAME #MEDIUM  
HS-416



RUBBER DAM FRAME  
#LARGE  
HS-415



RUBBER DAM FRAME #SMALL  
HS-417



# SPOON EXCAVATOR



DARBY-PERRY EXCAVATOR  
#HOLLOW HANDLE #EXC210. 211  
HS-418



DARBY-PERRY EXCAVATOR  
#HOLLOW HANDLE #EXC212. 213  
HS-419



DARBY-PERRY EXCAVATOR  
#PREMIUM #EXC210 211  
HS-420



DARBY-PERRY EXCAVATOR  
#PREMIUM #EXC212 213  
HS-421



DARBY-PERRY EXCAVATOR  
#STANDARD #EXC210 211  
HS-422



DARBY-PERRY EXCAVATOR  
#STANDARD #EXC212 213  
HS-423



OVAL SPOON EXCAVATOR  
#PREMIUM #EXC17WH  
HS-424



OVAL SPOON EXCAVATOR  
#STANDARD #EXC17WH  
HS-425



SPOON EXCAVATOR  
#EXC816  
HS-426



SPOON EXCAVATOR  
#EXC817  
HS-427



SPOON EXCAVATOR  
#EXC819  
HS-428



SPOON EXCAVATOR  
#EXC820  
HS-429

# SPOON EXCAVATOR



SPOON EXCAVATOR  
#PREMIUM #EXC14  
HS-430



SPOON EXCAVATOR  
#PREMIUM #EXC17H  
HS-431



SPOON EXCAVATOR  
#PREMIUM #EXC18H  
HS-432



SPOON EXCAVATOR  
#PREMIUM #EXC18WH  
HS-433



SPOON EXCAVATOR  
#PREMIUM #EXC19H  
HS-434



SPOON EXCAVATOR  
#PREMIUM #EXC31L  
HS-435



SPOON EXCAVATOR  
#PREMIUM #EXC31W  
HS-436



SPOON EXCAVATOR  
#PREMIUM #EXC32L  
HS-437



SPOON EXCAVATOR  
#PREMIUM #EXC33L  
HS-438



SPOON EXCAVATOR  
#PREMIUM #EXC133 134  
HS-439

# SPOON EXCAVATOR



SPOON EXCAVATOR  
#PREMIUM #EXC153 154  
HS-440



SPOON EXCAVATOR  
#PREMIUM EXC19WH  
HS-441



SPOON EXCAVATOR  
#PREMIUM EXC127 128  
HS-442



SPOON EXCAVATOR  
#PREMIUM EXC129 130  
HS-443



SPOON EXCAVATOR  
#PREMIUM EXC131 132  
HS-444



SPOON EXCAVATOR  
#STANDARD #EXC14  
HS-445



SPOON EXCAVATOR  
#STANDARD #EXC17H  
HS-446



SPOON EXCAVATOR  
#STANDARD #EXC18H  
HS-447



SPOON EXCAVATOR  
#STANDARD #EXC18WH  
HS-448



SPOON EXCAVATOR  
#STANDARD #EXC19H  
HS-449

# SPOON EXCAVATOR



SPOON EXCAVATOR  
#STANDARD #EXC31L

HS-450



SPOON EXCAVATOR  
#STANDARD #EXC31W

HS-451



SPOON EXCAVATOR  
#STANDARD #EXC32L

HS-452



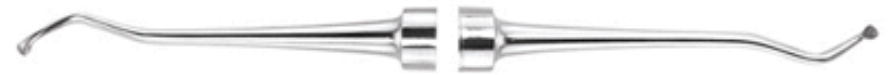
SPOON EXCAVATOR  
#STANDARD #EXC33L

HS-453



SPOON EXCAVATOR  
#STANDARD #EXC133 134

HS-454



SPOON EXCAVATOR #STANDARD  
#EXC153 154

HS-455



SPOON EXCAVATOR #STANDARD  
EXC19WH

HS-456



SPOON EXCAVATOR #STANDARD EXC125 126

HS-457



SPOON EXCAVATOR #STANDARD EXC127 128

HS-458



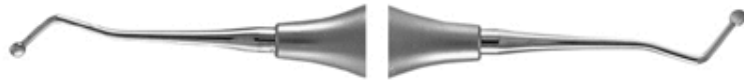
SPOON EXCAVATOR #STANDARD EXC131 132

HS-459

# SPOON EXCAVATOR



SPOON EXCAVATOR #STANDARD  
EXC129 130  
HS-460



SPOON EXCAVATOR HOLLOW  
HANDLE #EXC19H  
HS-461



SPOON EXCAVATOR HOLLOW  
HANDLE #EXC133 134  
HS-462



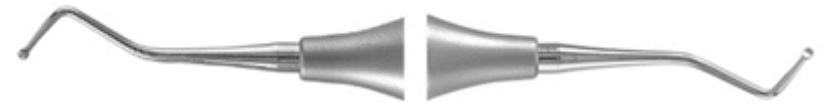
SPOON EXCAVATOR HOLLOW  
HANDLE EXC125 126  
HS-463



SPOON EXCAVATOR HOLLOW  
HANDLE EXC127 128  
HS-464



SPOON EXCAVATOR HOLLOW  
HANDLE EXC131 132  
HS-465



SPOON EXCAVATOR  
PREMIUM #EXC38 39  
HS-466



SPOON EXCAVATOR  
PREMIUM #EXC125 126  
HS-467

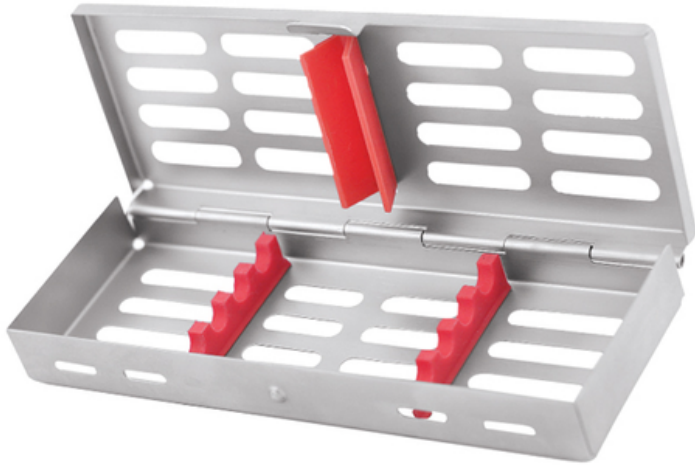


SPOON EXCAVATOR PREMIUM  
#EXCGL2  
HS-468

# Instrument Management System

06

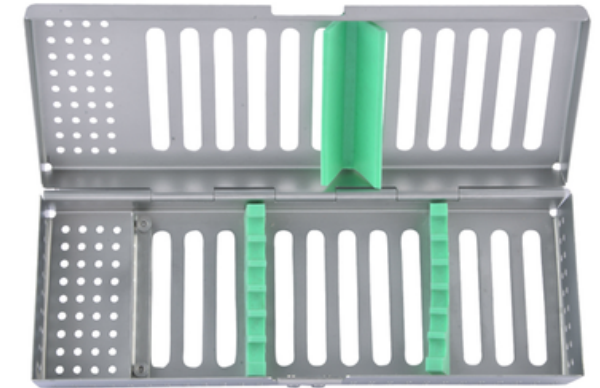




CASSETTE FOR 4 INSTRUMENTS  
HS-469



CASSETTE FOR 5 INSTRUMENTS  
HS-470



CASSETTE FOR 6 INSTRUMENTS  
UTILITY  
HS-471



CASSETTE FOR 6 INSTRUMENTS  
HS-472



CASSETTE FOR 7 INSTRUMENTS  
HS-473



CASSETTE FOR 10 INSTRUMENTS  
HS-474



CASSETTE FOR 20 INSTRUMENTS

HS-475



CASSETTE FOR EXTRACTION FORCEPS

HS-476



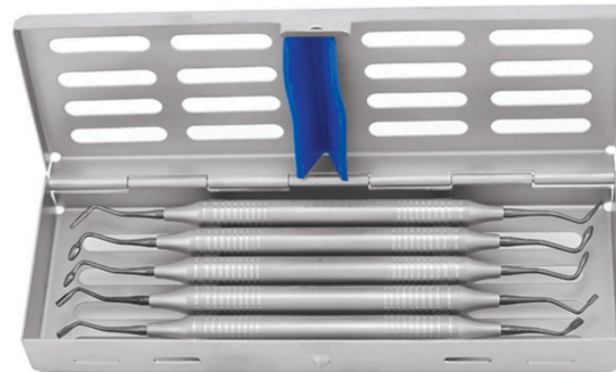
CASSETTE FOR ROOT ELEVATOR

HS-477



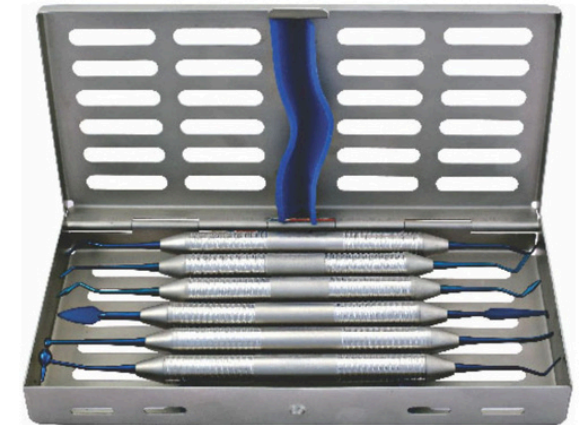
COMPOSITE INST.ANTERIOR BLACK  
55PCS # WC

HS-478



COMPOSITE INST.POSTERIOR BLACK  
55PCS WC

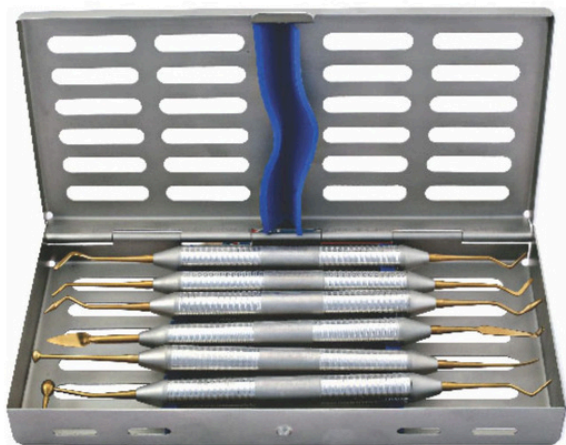
HS-479



COMPOSITE INST.TITANIUM BLUE S6  
PCS 6 WC

HS-480





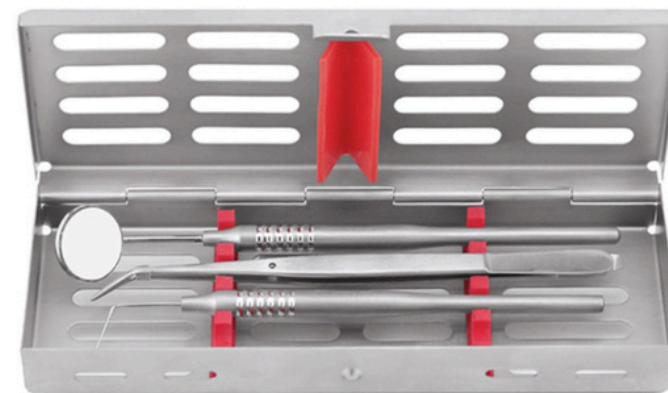
COMPOSITE INST.TITANIUM GOLD  
S6PCS 6 WC

HS-481



CONSERVATIVE INSTRUMENTS WITH  
CASSETTE

HS-482



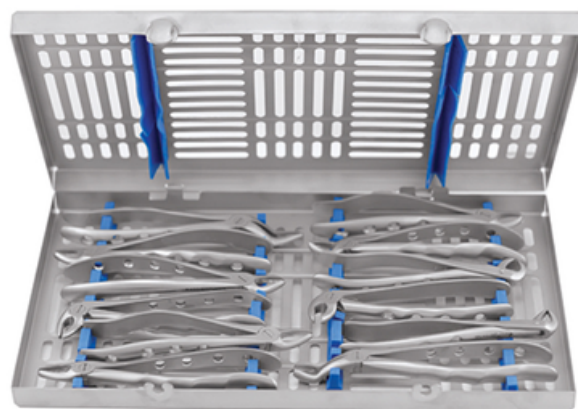
DIAGNOSTIC SET WITH CASSETTE

HS-483



ENDO SURGICAL WITH CASSETTE

HS-484



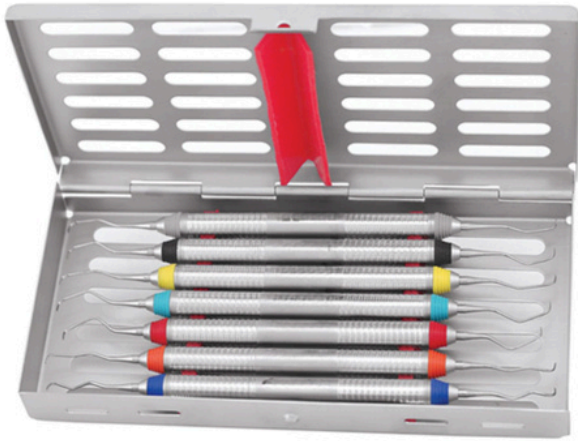
EXTRACTION FORCEPS PREMIUM  
WITH CASSETTE

HS-485



FILLING INSTRUMENTS WITH  
CASSETTE

HS-486



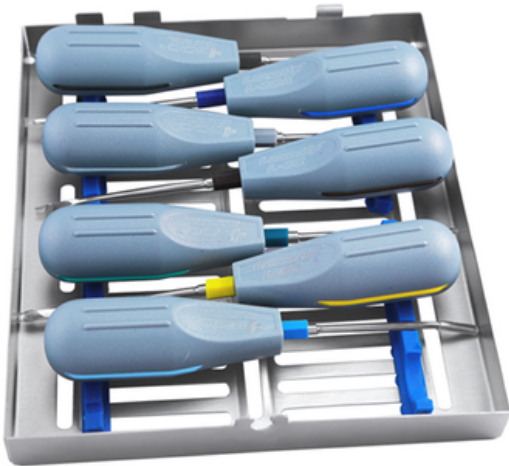
GRACEY CURETTES COLOR CODED  
S7PCS WC  
HS-487



GRACEY CURETTES S9PCS # 6 # WC  
HS-488



IMPACTION KIT WITH BOX  
HS-489



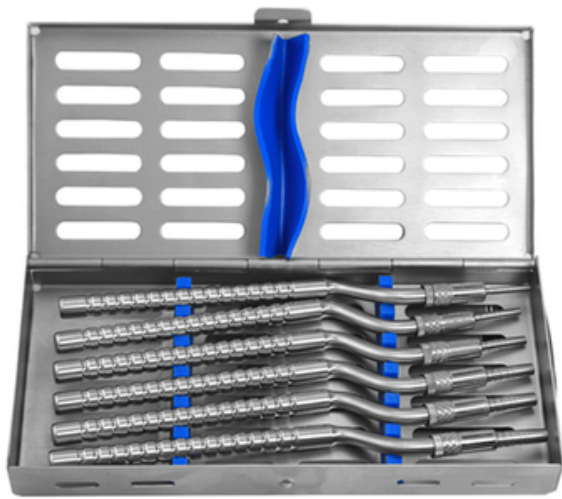
LUXATIP GREY WITH CASSETTE  
HS-490



MANIPAL SCALERS S3PCS  
HS-491

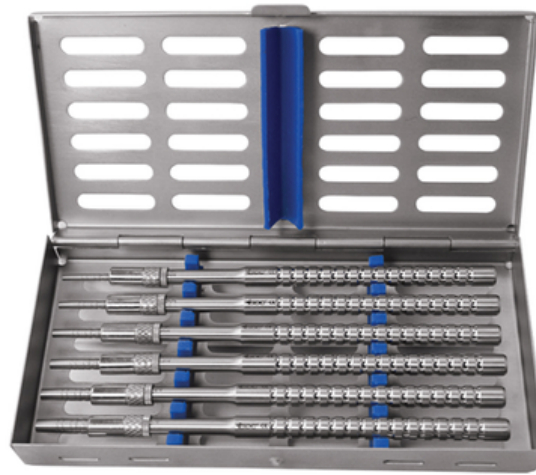


MICRO SURGERY KIT WITH CASSETTE  
HS-492



OSTEOTOMES CONCAVE S 6PCS  
WITH CASSETTE

HS-493



OSTEOTOMES FLAT STR S 6PCS WITH  
CASSETTE

HS-494



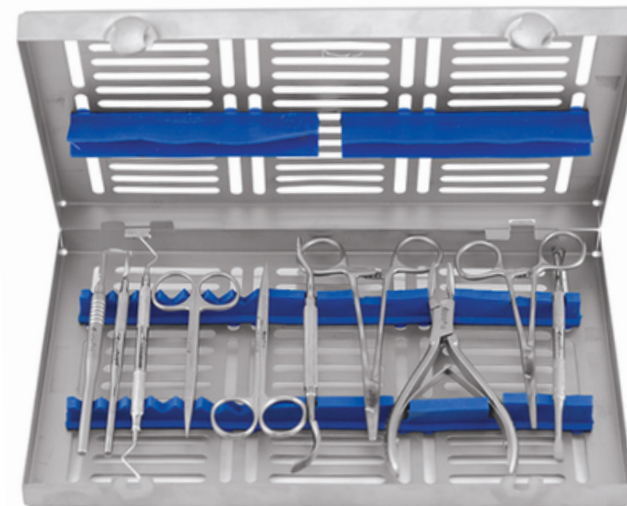
PERIO SURGICAL WITH CASSETTE

HS-495



ROOT ELEVATOR PREMIUM WITH  
CASSETTE

HS-496



SURGICAL INSTRUMENTS WITH  
CASSETTE

HS-497

LUXATIP

07





LUXATIP DE3  
HS-498



LUXATIP DE5  
HS-499



LUXATIP L2S  
HS-500



LUXATIP L3C  
HS-501



LUXATIP L3CA  
HS-502



LUXATIP L3IC  
HS-503



LUXATIP L3S  
HS-504



LUXATIP L5C  
HS-505



LUXATIP L5S  
HS-506

# Oral Surgery

08



## ASSORTED SURGICAL KITS



EXTRACTION FORCEPS PEEDO PREMIUM IN POUCH

HS-507





EXTRACTION FORCEPS ERGONOMIC IN POUCH

HS-508



EXTRACTION FORCEPS IN POUCH

HS-509



ROOT ELEVATOR PREMIUM IN POUCH

HS-510

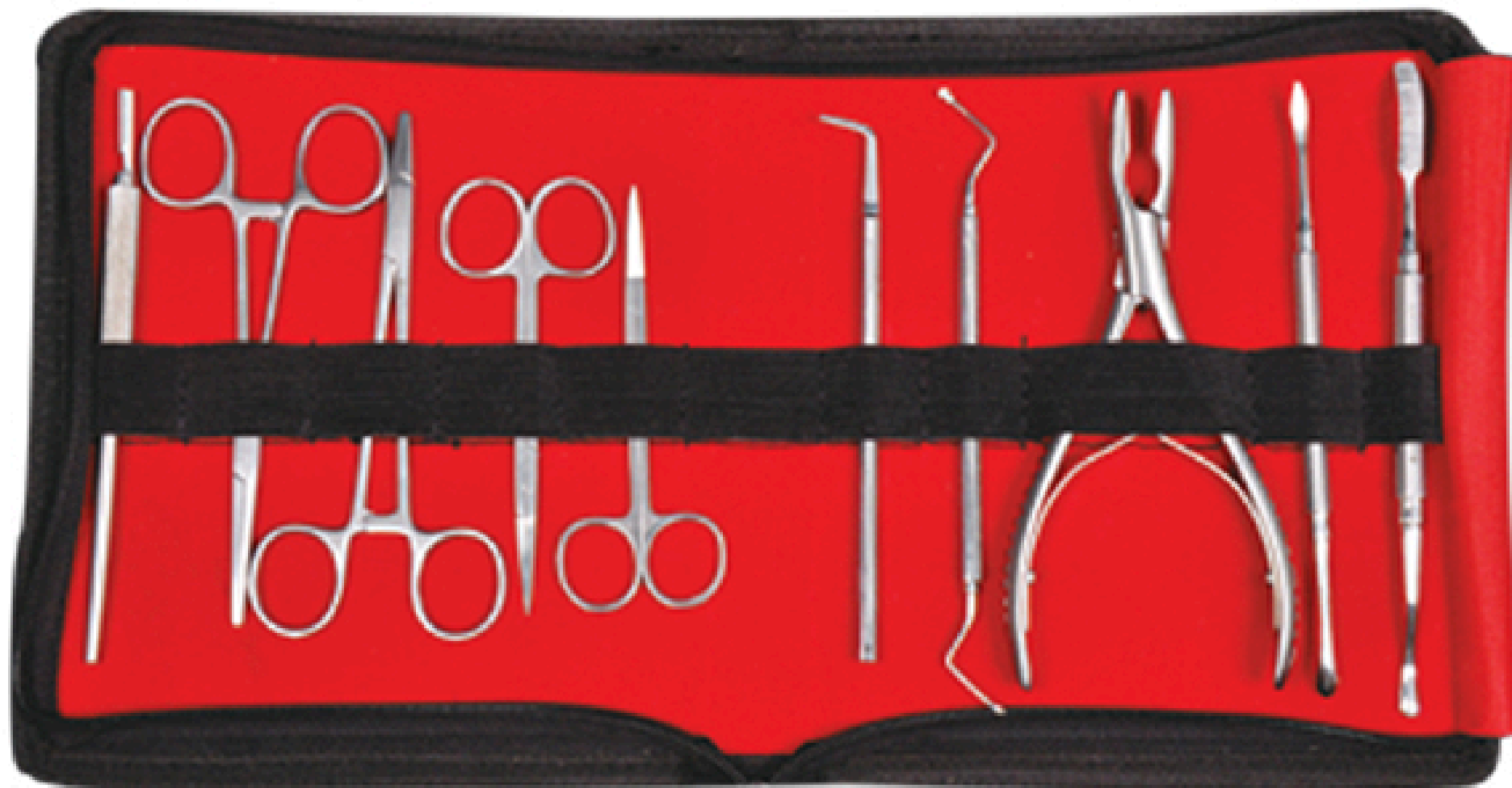


ROOT ELEVATOR STANDARD IN POUCH

HS-511



ROOT ELEVATOR WITH WARWICK JAMES IN POUCH  
HS-512



SURGICAL INSTRUMENTS IN POUCH

HS-513

# BONE CHISEL & MALLETS BHEADING



BONE CHISEL GARDNER 4MM

HS-514



BONE CHISEL GARDNER 3MM

HS-515



BONE CHISEL CHANDLER 7MM

HS-516



BONE CHISEL CHANDLER 5MM

HS-517



MALLET MEAD

HS-518

# BONE RONGEURS



BLUMENTHAL 45°  
HS-519



DOUBLE ACTION  
HS-520



BLUMENTHAL 90°  
HS-521



FRIEDMAN  
HS-522



BLUMENTHAL  
HS-523



# BONE RONGEURS



MEAD  
HS-524



MICRO FRIEDMAN 45°  
HS-525



MICRO FRIEDMAN 30° (S-SHAPE)  
HS-526



MICRO FRIEDMAN 90°  
HS-527



MICRO FRIEDMAN 30°  
HS-528



MINI-FRIEDMAN  
HS-529

# CHEEK RETRACTORS & TISSUE RETRACTORS



APPUNTITO RETRACTOR BLUNT 16.5 CM

HS-530



APPUNTITO RETRACTOR SHARP 16.5 CM

HS-531



AUSTIN CHEEK RETRACTOR  
HALFMOON

HS-532



AUSTIN CHEEK RETRACTOR WITH  
HANDLE

HS-533



AUSTIN CHEEK RETRACTOR FORK

HS-534



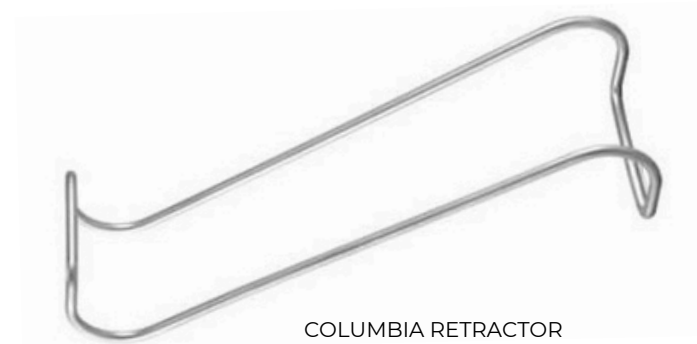
AUSTIN CHEEK RETRACTOR  
REGULAR

HS-535



BRUENINGS RETRACTOR

HS-536



COLUMBIA RETRACTOR

HS-537

# CHEEK RETRACTORS & TISSUE RETRACTORS



FARABEUFR RETRACTOR  
HS-538



FLEXIBLE CON MOLLA RETRACTOR TRCM4  
HS-539



FLEXIBLE CON MOLLA RETRACTOR TRCM3  
HS-540



FLEXIBLE CON MOLLA RETRACTOR TRCM2  
HS-541



HS-542



HS-543



GILLIES RETRACTOR  
HS-544



HARTMANN RETRACTOR  
HS-545



KOCHER RETRACTOR CRK1  
HS-546

# CHEEK RETRACTORS & TISSUE RETRACTORS



KOCHER RETRACTOR CRK2  
HS-547



KOCHER RETRACTOR CRK3  
HS-548



KOCHER RETRACTOR CRK4  
HS-549



HS-550



HS-551



HS-552



HS-553

LANGENBECK RETRACTOR CRL

# CHEEK RETRACTORS & TISSUE RETRACTORS



MIDDLEDDORF RETRACTOR CRMD1

HS-554



MIDDLEDDORF RETRACTOR CRMD2

HS-555



MIDDLEDDORF RETRACTOR CRMD3

HS-556



HS-559



HS-560

MOUTH GAGS



HS-557

MOUTH GAGS MOLT SMALL



HS-558



ORRINGER RETRACTOR SMALL

HS-561



ORRINGER RETRACTOR MEDIUM

HS-562



ORRINGER RETRACTOR LARGE

HS-563

# CHEEK RETRACTORS & TISSUE RETRACTORS



RAGNELL – DAVIS RETRACTOR

HS-564



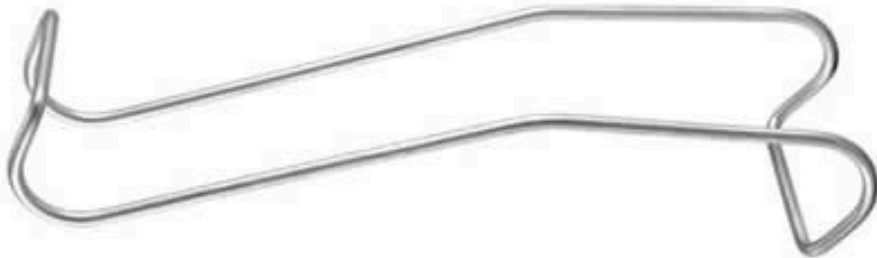
SENN MILLER RETRACTOR SHARP

HS-565



RAMUS RETRACTOR

HS-566



STERNBERG RETRACTOR

HS-567



UNIVERSITY OF MINNESOTA  
RETRACTOR

HS-568



WEIDER CHEEK & TONGUE  
DEPRESSOR 14CM

HS-569



WEIDER CHEEK & TONGUE  
DEPRESSOR 15CM

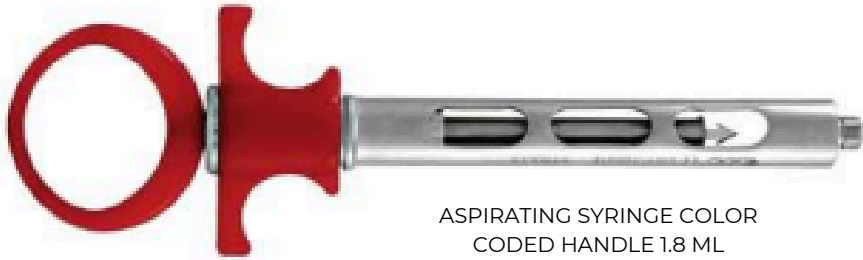
HS-570



SENN MILLER RETRACTOR SHARP

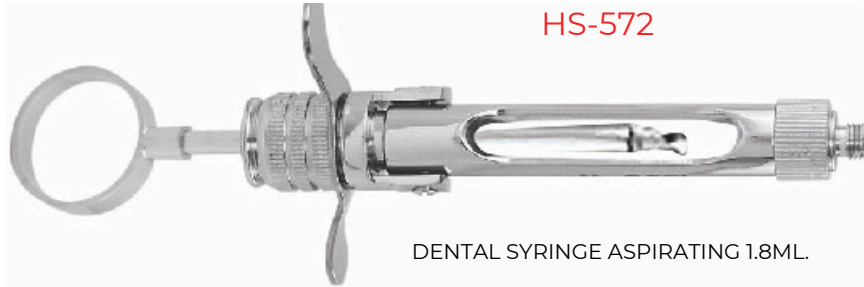
HS-571

# DENTAL SYRINGE



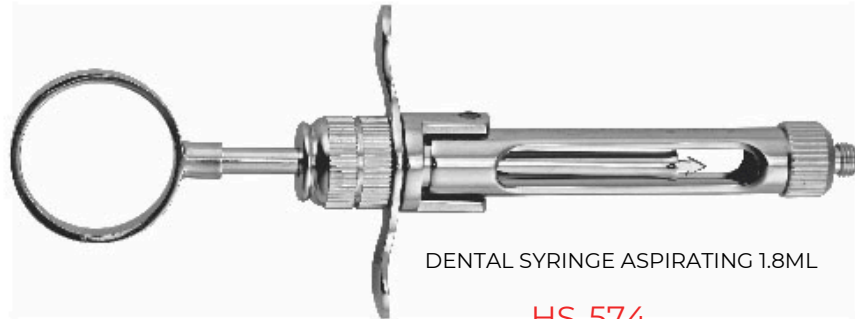
ASPIRATING SYRINGE COLOR  
CODED HANDLE 1.8 ML

HS-572



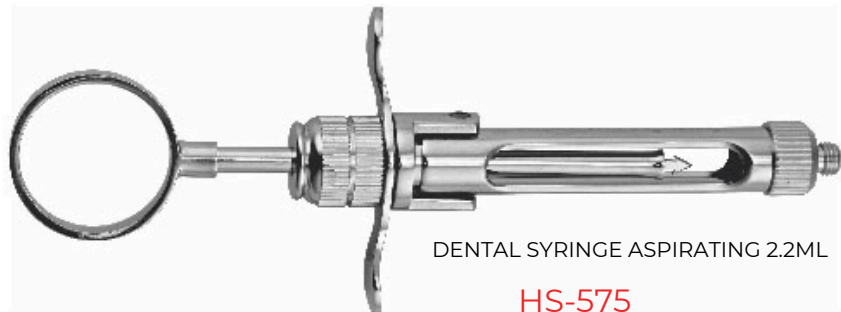
DENTAL SYRINGE ASPIRATING 1.8ML

HS-573



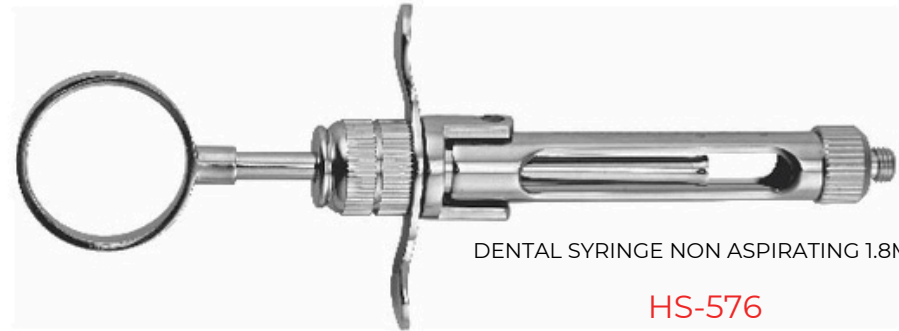
DENTAL SYRINGE ASPIRATING 1.8ML

HS-574



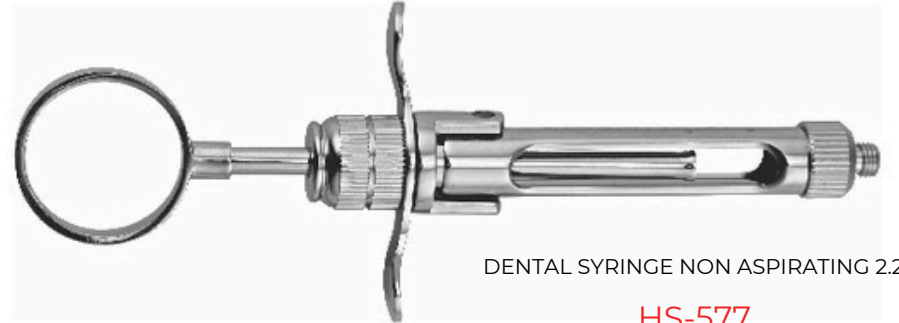
DENTAL SYRINGE ASPIRATING 2.2ML

HS-575



DENTAL SYRINGE NON ASPIRATING 1.8ML

HS-576



DENTAL SYRINGE NON ASPIRATING 2.2ML

HS-577



INTRALIGAMENTAL SYRINGE - INJECT

HS-578



SELF ASPIRATING SYRINGE COLOR  
CODED HANDLE 1.8 ML

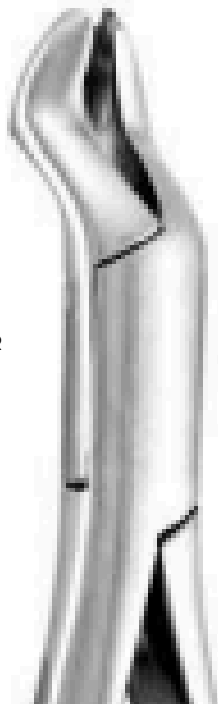
HS-579

# EXTRACTION FORCEPS AMERICAN PATTERN



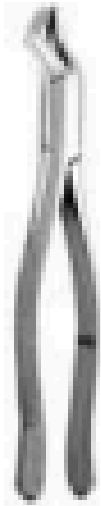
COWHORN FIRST & SECOND LOWER MOLAR #F23

HS-580



FIRST & SECOND UPPER MOLAR TEETH LEFT #F88L

HS-581



FIRST & SECOND UPPER MOLAR TEETH LEFT #F53L

HS-582



FIRST & SECOND UPPER MOLAR TEETH RIGHT #F53R

HS-584



LOWER INCISOR CANINE PREMOLARS ROOT #F151

HS-583



# EXTRACTION FORCEPS AMERICAN PATTERN



PEEDO LOWER PRIMARY TEETH &  
ROOTS UNIVERSAL #F151S  
**HS-585**



PEEDO UPPER PRIMARY TEETH &  
ROOTS UNIVERSAL #F150S  
**HS-587**



TOMES UPPER & LOWER  
FRAGMENTS & ROOTS #F69  
**HS-586**



UPPER INCISOR CANINE  
PREMOLARS ROOT #F150  
**HS-588**

# EXTRACTION FORCEPS ATRAUMATIC



LOWER PREMOLAR  
HS-589



LOWER ROOT  
HS-591



LOWER THIRD MOLAR  
HS-592



UPPER CENTRALS & CANINES  
HS-594



UPPER PREMOLAR  
HS-590



UPPER ROOT  
HS-593

# EXTRACTION FORCEPS ERGONOMIC



LOWER MOLAR NO. 73E  
HS-595



LOWER MOLAR NO. 86E  
HS-596



LOWER PREMOLAR NO. 13E  
HS-597



LOWER ROOT NO. 74NE  
HS-598



UPPER ANTERIOR NO. 1E  
HS-599



UPPER MOLAR LEFT NO. 90E  
HS-600



UPPER MOLAR LEFT NO.18E  
HS-601



UPPER MOLAR RIGHT NO. 89E  
HS-602



UPPER MOLAR RIGHT NO.17E  
HS-603

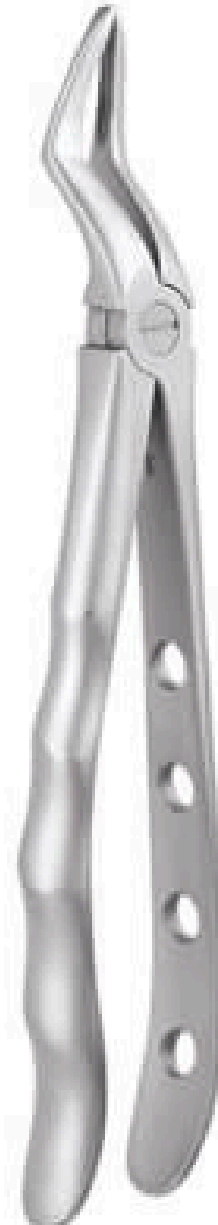
# EXTRACTION FORCEPS ERGONOMIC



UPPER PREMOLAR NO. 7E  
HS-604



UPPER ROOT NO. 951.00  
HS-605



UPPER ROOT NO. 51AE  
HS-606



UPPER THIRD MOLAR NO. 67AE  
HS-607

# EXTRACTION FORCEPS PEEDO PREMIUM



LOWER MOLAR  
HS-608



LOWER PREMOLAR  
HS-609



LOWER ROOT  
HS-610



UPPER ANTERIOR  
HS-611



UPPER MOLAR  
HS-612



UPPER PREMOLAR  
HS-613



UPPER ROOT  
HS-614

# EXTRACTION FORCEPS PEEDO STANDARD



LOWER MOLAR  
HS-615



LOWER PREMOLAR  
HS-617



LOWER ROOT  
HS-619



UPPER ANTERIOR  
HS-621



UPPER MOLAR  
HS-616



UPPER PREMOLAR  
HS-618



UPPER ROOT  
HS-620

# EXTRACTION FORCEPS PREMIUM



LOWER MOLAR & WISDOM LEFT  
HS-622



LOWER MOLAR & WISDOM RIGHT  
HS-623



LOWER MOLAR NO. 22P  
HS-624



LOWER MOLAR NO. 73P  
HS-625



LOWER MOLAR NO. 86  
HS-626



LOWER MOLAR NO. 86A  
HS-627



LOWER MOLAR NO. 86AP  
HS-628



LOWER MOLAR NO. 86B  
HS-629



LOWER MOLAR NO. 86C  
HS-630



LOWER PREMOLAR NO. 13PV  
HS-631

# EXTRACTION FORCEPS PREMIUM



LOWER ROOT NO. 33AP  
HS-632



LOWER ROOT NO. 33LP  
HS-633



LOWER ROOT NO. 33P  
HS-634



LOWER ROOT NO. 45P  
HS-635



LOWER ROOT NO. 74NP  
HS-636



LOWER THIRD MOLAR NO. 79P  
HS-637



UPPER ANTERIOR NO. 1P  
HS-638



UPPER MOLAR LEFT NO. 90P  
HS-639



# EXTRACTION FORCEPS PREMIUM



UPPER MOLAR LEFT NO.18P

HS-640



UPPER MOLAR RIGHT NO. 89P

HS-641



UPPER MOLAR RIGHT NO.17P

HS-642



UPPER PREMOLAR NO. 7P

HS-643



UPPER ROOT NARROW NO. 29NP

HS-644



UPPER ROOT  
NO.51AP

HS-650



UPPER ROOT NO. 41P

HS-645



UPPER ROOT NO. 44P

HS-646



UPPER ROOT NO. FX30P

HS-647



UPPER THIRD MOLAR NO.67AP

HS-648



UPPER ROOT No.FX29P

HS-649

# EXTRACTION FORCEPS PREMIUM #BLACK



LOWER MOLAR NO. 73  
HS-651



LOWER MOLAR NO. 86  
HS-652



LOWER PREMOLAR  
HS-653



LOWER ROOT NO. 74N  
HS-654



UPPER ANTERIOR  
HS-655



UPPER MOLAR LEFT NO. 90  
HS-656



UPPER MOLAR RIGHT NO. 89  
HS-657



UPPER MOLAR RIGHT  
HS-658



UPPER PREMOLAR  
HS-659



UPPER ROOT  
HS-660

# EXTRACTION FORCEPS SECURE



EXTRACTION FORCEP SECURE #  
UPPER ROOT # SFX944.00  
**HS-661**



LOWER ROOT NO. 845.00  
**HS-662**



LOWER ROOT NO. 945.00  
**HS-663**



LOWER ROOT NO. 959.01  
**HS-664**



LOWER ROOT NO. 974.00  
**HS-665**



UPPER ROOT NO. 149.11  
**HS-666**



UPPER ROOT NO. 197.11  
**HS-667**



UPPER ROOT NO. 849.00  
**HS-668**



UPPER ROOT NO. 897.00  
**HS-669**



UPPER ROOT NO. 944.01  
**HS-670**



UPPER ROOT NO. 951.00  
**HS-671**

# EXTRACTION FORCEPS STANDARD



FX22-1-2RS (1)  
HS-672



FX22-1-2RS  
HS-673



FXA1 HS-674      FXA2 HS-675



LOWER MOLAR  
No. 86P  
HS-676



LOWER MOLAR No. 87  
HS-677



LOWER PREMOLAR No. 13  
HS-678



LOWER PREMOLAR No. 13P  
HS-679



LOWER PREMOLAR No. 75  
HS-680



LOWER ROOT No. 33LS  
HS-681

# EXTRACTION FORCEPS STANDARD



LOWER ROOT No. 33S  
HS-682



LOWER ROOT No. 45S  
HS-683



LOWER ROOT NO. 74N  
HS-684



LOWER ROOT NO. 74S  
HS-685



LOWER THIRD MOLAR NO. 79  
HS-686



SEPARATING LOWER MOLAR  
HS-687



SEPARATING UPPER MOLAR  
HS-688



UNIVERSAL LOWER ROOT  
HS-689



UNIVERSAL UPPER ROOT  
HS-690



UPPER ANTERIOR NO. 1  
HS-691



UPPER MOLAR  
LEFT No. 18S  
HS-692

# EXTRACTION FORCEPS STANDARD



UPPER MOLAR LEFT No. 90  
**HS-693**



UPPER MOLAR RIGHT No. 89  
**HS-694**



UPPER PREMOLARS NO. 7  
**HS-695**



UPPER ROOT No. 30S  
**HS-696**



UPPER ROOT No. 41S  
**HS-697**



UPPER ROOT No. 44S  
**HS-698**



UPPER ROOT No. 51S  
**HS-699**



UPPER ROOT No. 76N  
**HS-700**



UPPER ROOT NO.51AS  
**HS-701**



UPPER THIRD  
MOLAR No. 67A  
**HS-702**

# HEMOSTATS & NEEDLE HOLDERS



BABY MOSQUITO CURVED  
HS-703



BABY MOSQUITO STRAIGHT  
HS-704



CASTROVIEJO NEEDLE  
HOLDER CURVED  
HS-705



CASTROVIEJO NEEDLE  
HOLDER STRAIGHT  
HS-706



CRILE-CURVED  
HS-707



KELLY-CURVED  
HS-708



KELLY-STRAIGHT  
HS-709



MOSQUITO CURVED TOOTHED 12.5CM  
HS-710



MOSQUITO-CURVED-12CM  
HS-711



MOSQUITO-STRAIGHT-12CM  
HS-712



MOSQUITO-STRAIGHT-TOOTHED-12.5CM  
HS-713



NEEDLE HOLDER  
ADSON STRAIGHT  
HS-714

# HEMOSTATS & NEEDLE HOLDERS



NEEDLE HOLDER DERF CURVED  
HS-715



NEEDLE-HOLDER-CRILE-WOOD  
HS-716



NEEDLE-HOLDER-MAYO-HEGAR-CURVED-16cm  
HS-717



NEEDLE-HOLDER-MAYO-HEGAR-STRAIGHT-16cm  
HS-718



NEEDLE-HOLDER-MAYO-HEGAR-STRAIGHT-18-CM  
HS-719



NEEDLE-HOLDER-MAYO-HEGAR-STRAIGHT-20-CM  
HS-720



OLSEN-HEGAR-NEEDLE-HOLDER-WITH-SCISSOR  
HS-721



# METAL & FRAZIER SUCTION TUBE

ASPIRATOR ADOPTER  
SILICON TUBING

HS-722



FRAZIER SUCTION TIP 1.5mm

HS-723



FRAZIER SUCTION TIP 1mm

HS-724



FRAZIER SUCTION TIP 2.5mm

HS-725



FRAZIER SUCTION TIP 2mm

HS-726



FRAZIER SUCTION TIP 3.5mm

HS-727



FRAZIER SUCTION TIP 3mm

HS-728



METAL SUCTION TIP 1.5mm

HS-729



METAL SUCTION TIP 2.5mm

HS-730



METAL SUCTION TIP 2mm

HS-731



METAL SUCTION TIP 5mm

HS-732

# PERIOSTEAL ELEVATOR & BONE FILE



PERIOSTEAL ELEVATOR FREER

HS-733



PERIOSTEAL ELEVATOR KRAMER NEVINS PKN1 #3

HS-734



PERIOSTEAL ELEVATOR LABANCA2 PREMIUM

HS-735



PERIOSTEAL ELEVATOR P8D

HS-736



PERIOSTEAL ELEVATOR P149

HS-737



PERIOSTEAL ELEVATOR P856

HS-738



PERIOSTEAL ELEVATOR PHP3

HS-739



PERIOSTEAL ELEVATOR PHP4

HS-740



PERIOSTEAL ELEVATOR SELDIN.

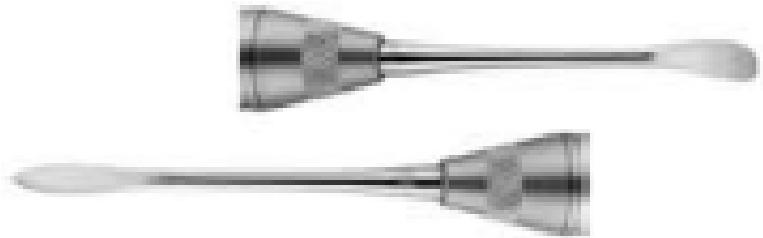
HS-741



PERIOSTEAL ELEVATOR SELDIN

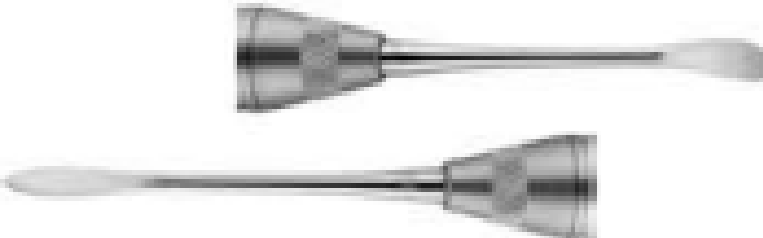
HS-742

# PERIOSTEAL ELEVATOR & BONE FILE



PERIOSTEAL ELEVATOR WOODSON #PREMIUM

HS-743



PERIOSTEAL ELEVATOR WOODSON #PREMIUM1

HS-744



PERIOSTEAL GLICKMAN ELEVATOR

HS-745



PERIOSTEAL GLICKMAN ELEVATOR1

HS-746



PERIOSTEAL GOLDMAN-FOX ELEVATOR

HS-747



PERIOSTEAL GOLDMAN-FOX ELEVATOR2

HS-748



HS-749

PERIOSTEAL HIRSCHFELD ELEVATOR



PERIOSTEAL HIRSCHFELD ELEVATOR1

HS-750



PERIOSTEAL HOWARTH ELEVATOR

HS-751



PERIOSTEAL HOWARTH ELEVATOR1

HS-752

# PERIOSTEAL ELEVATOR & BONE FILE



PERIOSTEAL MOLT-9 LARGE ELEVATOR

HS-753



PERIOSTEAL MOLT-9 SMALL ELEVATOR

HS-754



PERIOSTEAL MOLT ELEVATOR P883

HS-755



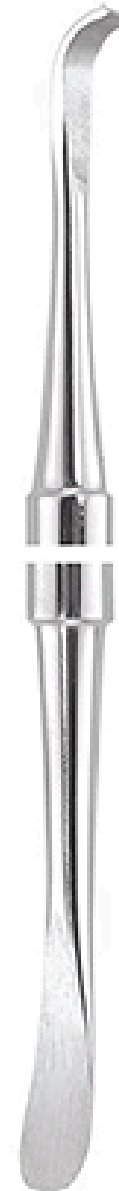
PERIOSTEAL LABANCA ELEVATOR STANDARD

HS-756



PERIOSTEAL KRAMER-NEVINS ELEVATOR

HS-757



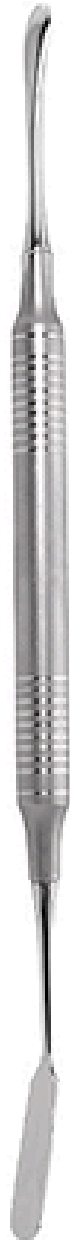
PERIOSTEAL FREER ELEVATOR P16

HS-758



PERIOSTEAL SELDIN ELEVATOR

HS-759



PERIOSTEAL PRICHARD ELEVATOR

HS-760

# PROXITIP - LUXATING HYBRIDS



PROXITIP - BERNARD LEFT

HS-761



PROXITIP - BERNARD RIGHT

HS-762



PROXITIP - WARWICK JAMES LEFT

HS-763



PROXITIP - WARWICK JAMES RIGHT

HS-764



PROXITIP LARGE DISTAL

HS-765



PROXITIP LARGE MESIAL

HS-766



PROXITIP SMALL CURVED

HS-767



PROXITIP SMALL STRAIGHT

HS-770



PROXITIP SMALL DISTAL

HS-768



PROXITIP STRAIGHT SPADE

HS-771



PROXITIP SMALL MESIAL

HS-789

# RETRACTOR



CHEEK RETRACTOR BISHOP  
HS-772



CHEEK RETRACTOR MARTIN SIMPLEX  
HS-773



CHEEK RETRACTOR TRA2 WITH SUCTION  
HS-774



CHEEK RETRACTOR TRA3 WITH SUCTION  
HS-775



CHEEK RETRACTOR VESTIBULUM  
HS-776



MSY RETRACTOR  
HS-777



UNIVERSITY OF MINNESOTA WITH SUCTION  
HS-778



WEIDER CHEEK & TONGUE DEPRESSOR WITH SUCTION  
HS-779

# ROOT ELEVATOR LINDO LEVIAN



LINDO LEVIAN  
No. 1

HS-780



LINDO LEVIAN  
No. 2

HS-781



LINDO LEVIAN  
No. 3

HS-782



LINDO LEVIAN  
No. 4

HS-783



LINDO LEVIAN  
No. 5

HS-784



LINDO LEVIAN  
No. 6

HS-785

# ROOT ELEVATOR PREMIUM



BEIN No. 1  
HS-786



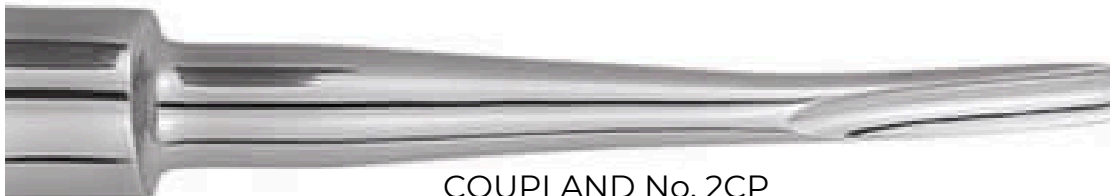
BEIN No. 2  
HS-787



BEIN No. 3  
HS-788



COUPLAND No. 1CP  
HS-789



COUPLAND No. 2CP  
HS-790



COUPLAND No. 3CP  
HS-791



CRYER No. 31P & 32P  
HS-792



# ROOT ELEVATOR PREMIUM



ROOT TIP PICK DOUBLE END 13 14

HS-793



ROOT TIP PICK DOUBLE ENDED No. 23

HS-794



FLOHR No. 1FP

HS-795



LONDON HOSPITAL

HS-796



WINTER CRYER LEFT

HS-797



WINTER CRYER RIGHT

HS-798



FLOHR No. 2FP-3FP

HS-799



# ROOT ELEVATOR STANDARD



APEXO No. 301  
HS-800



APEXO No. 302  
HS-801



BEIN No. 1  
HS-802



BEIN No. 2  
HS-803



BEIN No. 3  
HS-804



BEIN No. 4  
HS-805



BEIN No. 5  
HS-806



BEIN No. 6  
HS-807



COGSWELL  
HS-808



COUPLAND No. 1  
HS-809



COUPLAND No. 1C  
HS-810



COUPLAND No. 2  
HS-811



COUPLAND No. 2C  
HS-812

# ROOT ELEVATOR STANDARD



COUPLAND No. 3  
HS-813



COUPLAND No. 3C  
HS-814



CRYER No. 30 & 31  
HS-815



CRYER No. 31 & 32  
HS-816



FLOHR No. 1  
HS-817



FLOHR No. 2F-3F  
HS-818



HEIDBRINK  
STRAIGHT No. 1  
HS-819



HEIDBRINK  
STRAIGHT No. 2  
HS-820



LACLUSE  
HS-821



LONDON HOSPITAL  
HS-822

# ROOT ELEVATOR STANDARD



MILLER APEVO No. 71 & 72  
HS-823



MILLER APEVO No. 73 & 74  
HS-824



ROOT ELEVATOR SPADE  
#PREMIUM  
HS-825



ROOT ELEVATOR SPADE  
#STANDARD  
HS-826



ROOT TIP PICK  
DOUBLE END 13 14  
HS-827



ROOT TIP PICK DOUBLE  
ENDED No. 2 3  
HS-828



ROOT TIP PICK  
HEIDBRINK No. 1  
HS-829



ROOT TIP PICK HEIDBRINK No. 2 & 3  
HS-830



HS-831



SELDIN No. 1L-1R  
HS-832



HS-833



SELDIN No. 2S  
HS-834



SELDIN No. 3S  
HS-835



SELDIN No. 4L-4R  
HS-836



SELDIN No. 34  
HS-837



SELDIN No. 34S  
HS-838



SELDIN No.  
301W  
HS-839



SELDIN No. 304W  
HS-840



WARWICK JAME  
STRAIGHT  
HS-841



WARWICK JAMES  
RIGHT & LEFT  
HS-842

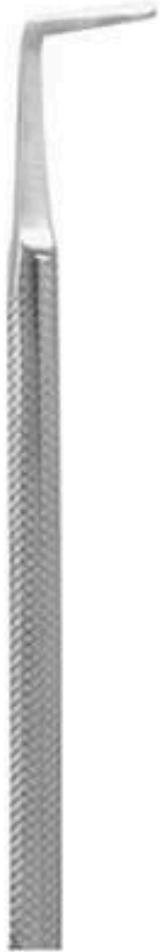


WINTER CRYER LEFT  
HS-843



WINTER CRYER RIGHT  
HS-844

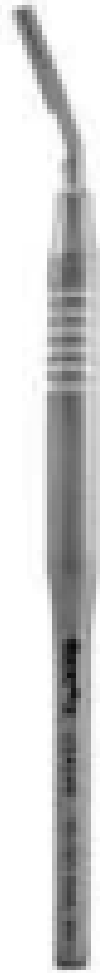
# SCALPEL HANDLES



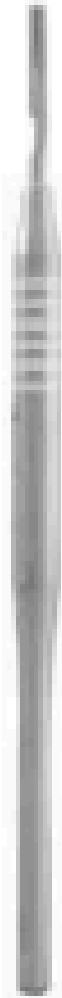
MOON PROBE  
HS-845



ORIENTABLE SCALPEL  
HANDLE  
HS-846



SCALPEL HANDLE  
14.5 CM CURVED  
#4  
HS-847



SCALPEL  
HANDLE 14.5 CM  
STRAIGHT #4  
HS-848



SCALPEL HANDLE  
CURVED SOLID HANDLE  
HS-849



SCALPEL HANDLE FLAT No. 3  
HS-850



SCALPEL HANDLE NO 7  
HS-851



SCALPEL HANDLE No. 4  
HS-852



SCALPEL HANDLE No.3 WITH SCALE  
HS-853



SCALPEL HANDLE STRAIGHT SOLID HANDLE  
HS-854

# SCISSORS



CASTROVIEJO CURVED 12CM  
HS-855



CASTROVIEJO CURVED SCISSOR 14cm No. S38  
HS-856



CASTROVIEJO STRAIGHT 12CM  
HS-857



CASTROVIEJO STRAIGHT  
SCISSOR 14cm No. S3  
HS-858



CROWN & BAND CUTTING  
CURVED SCISSOR  
HS-859



CROWN & BAND CUTTING STRAIGHT SCISSOR  
HS-860



DEAN ANGULAR  
HS-861



GOLDMAN FOX CURVED SCISSOR  
HS-862



GOLDMAN FOX DOUBLE CURVED SCISSOR  
HS-863



GOLDMAN FOX STRAIGHT SCISSOR  
HS-864

# SCISSORS



HEATH SCISSOR FOR SUTURE CUTTING 1  
HS-865



HEATH SCISSOR FOR SUTURE CUTTING  
HS-866



IRIS-ANGULAR-11.5CM  
HS-867



IRIS-CURVED-11.5CM.  
HS-868



IRIS-CURVED-11.5CM  
HS-869



IRIS-SIDE-CURVED-11.5CM  
HS-870



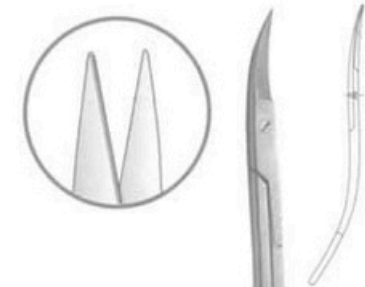
IRIS-STRAIGHT-11.5CM  
HS-871



KELLY-CURVED-SCISSOR  
HS-872



KELLY-STRAIGHT-SCISSOR  
HS-873



LEGRANGE-DOUBLE-CURVED  
HS-874



# SCISSORS



LOCKLIN-SCISSOR-CURVED-HANDLE

HS-875



MARILYN-CURVED-SCISSOR-10CM

HS-876



MARILYN-MICRO-TIP-CURVED-SCISSOR

HS-877



MARILYN-STRAIGHT-SCISSOR-10CM

HS-878



MAYO CURVED SCISSOR

HS-879



MAYO-STRAIGHT-SCISSOR

HS-880



METZENBAUM CURVED SCISSOR

HS-881



MICRO CASTROVIEJO  
CURVED SCISSOR

HS-882



MICRO-IRIS-CURVED-11.5CM

HS-883

# SCISSORS



MICRO-IRIS-STRAIGHT-11.5CM

HS-884



NOYES ANGULAR SCISSOR

HS-885



NOYES CURVED SCISSOR

HS-886



NOYES STRAIGHT SCISSOR

HS-887



QUINBY-CURVED-12.5CM

HS-888



QUINBY-STRAIGHT-12.5CM

HS-889



SPENCER SUTURE CUTTING  
ANGULAR 13 CM

HS-890



SPENCER-FOR-SUTURE-CUTTING-LARGE

HS-891



WESTCOTT CURVED SCISSOR

HS-892

# TOWEL CLAMPS, DRESSING & STERILISING FORCEPS



BACKHAUS 9cm  
HS-893



BACKHAUS 11cm  
HS-894



BACKHAUS 13cm  
HS-895



CHEATLE-FORCEP  
HS-896



FOERSTER STRAIGHT  
HS-897



GROSS MAIER CURVED  
HS-898



ROGGE FORCEP RF30  
HS-899

# TUNGSTEN CARBIDE SCISSOR & NEEDLE HOLDER



CROWN & BAND CUTTING  
TC STRAIGHT 12CM

HS-900



CROWN-&BAND-CUTTING-  
TC-CURVED-12CM

HS-901



GOLDMAN-FOX-SCISSOR-  
DOUBLE-CURVED-TC-13-CM

HS-902



GOLDMAN-FOX-SCISSOR-  
STRAIGHT-13-CM-TC

HS-903



IRIS TC CURVED 11.5CM

HS-904



IRIS TC STRAIGHT  
11.5CM

HS-905



METZENBAUM-TC-  
CURVED-12CM

HS-906



METZENBAUM-TC-  
STRAIGHT-12CM

HS-907



MICRO CASTROVIEJO NEEDLE  
HOLDER TC CURVED 14CM

HS-908



MICRO CASTROVIEJO NEEDLE  
HOLDER TC STRAIGHT 14CM

HS-909

# TUNGSTEN CARBIDE SCISSOR & NEEDLE HOLDER



MICRO CASTROVIEJO NEEDLE  
HOLDER TC STRAIGHT 18CM  
HS-910



NEEDLE-HOLDER-DERF-TC  
HS-911



NEEDLE-HOLDER-HALSEY-TC  
HS-912



NEEDLE-HOLDER-MAYO-  
HEGAR-TC-TIP-16-CM-STRAIGHT  
HS-913



NEEDLE-HOLDER-TC-  
CRILEWOOD-15CM  
HS-914



SPENCER-SCISSOR-  
STRAIGHT-10-CM-TC  
HS-915



SPENCER-SCISSOR-  
STRAIGHT-13-CM-TC  
HS-916



SPENCER-TC-ANGULAR-10CM  
HS-917



SPENCER-TC-ANGULAR-13CM  
HS-918

# ORTHODONTICS

09



# HAND INSTRUMENTS



BAND PUSHER  
HS-1242



BAND SEATER  
HS-1243



BOLEY GAUGE  
HS-1244



BOON'S GAUGE WITH LID  
HS-1245



BOON'S GAUGE  
HS-1246



BRACKET HOLDING  
TWEezer  
HS-1247



BRACKET HOLDING  
TWEezer  
HS-1248



BRACKET PLACING  
TWEezer  
HS-1249



DISTAL BENDING  
INSTRUMENT  
HS-1250



BUCCAL TUBE  
HOLDER  
HS-1251



DONTRIX GAUGE  
HS-1252



ELASTIC APPLICATOR  
HS-1253



HEIGHT GAUGE  
ADJUSTABLE  
HS-1254



HEIGHT GAUGE WICK  
TYPE O18  
HS-1255



HEIGHT GAUGE  
WICK TYPE O22  
HS-1256



LIGATURE DIRECTIONAL  
INSTRUMENTS  
HS-1257



LIGATURE TUCKER  
HS-1258



LIGHT WEIGHT POSITIONER  
(ALUMINIUM)  
HS-1259



MATHIEW PLIER  
SMAHA STRAIGHT  
HS-1260



MATHIEW PLIER  
SMAHA CURVED  
HS-1261



UTILITY INSTRUMENT  
HS-1262



WIRE TWISTER 15CM  
HS-1263



WIRE TWISTER  
HS-1264



# ORTHODONTICS CUTTERS TC



DISTAL END CUTTER  
MICRO ANGULAR

HS-1265



ARCH WIRE CUTTER

HS-1266



DISTAL END  
CUTTER MICRO

HS-1267



DISTAL END CUTTER  
SHORT HANDLE

HS-1268



DISTAL END CUTTER WITH  
FLUSH CUT LONG HANDLE

HS-1269



DISTAL END CUTTER WITH  
HOLE SHORT HANDLE

HS-1270



DISTAL END CUTTER

HS-1271



HARD WIRE  
CUTTER 30007

HS-1272



HARD WIRE  
CUTTER 30008

HS-1273



HARD WIRE  
CUTTER

HS-1274



LIGATURE  
CUTTER 15°

HS-1275



LIGATURE CUTTER  
3000 106

HS-1276

# ORTHODONTICS CUTTERS TC



LIGATURE CUTTER 3000 708

HS-1277



PIN LIGATURE CUTTER 45°

HS-1278



MICRO LIGATURE CUTTER

HS-1279

# ORTHODONTICS PLIERS



ADAM PLIER  
HS-1280



ANTERIOR BAND  
REMOVER PLIER  
HS-1281



BALL & SOCKET PLIER  
HS-1282



BAND FORMING LEFT  
HS-1283



BAND FORMING  
RIGHT  
HS-1284



BAND PINCHING  
LEFT AND RIGHT  
HS-1285 HS-1286



BANDCROWN  
CRIMPING PLIER  
HS-1287



BIRD BEAK-LONG PLIER  
HS-1288



BRACKET REMOVER  
CURVED  
HS-1289



BIRD BEAK-SHORT  
PLIER  
HS-1290



BRACKET REMOVER  
STRAIGHT  
HS-1291



CANINE CONTOURING  
HS-1292



CINCH BACK  
HS-1293



DE LA ROSA BAND  
CONTOURING  
HS-1294



DE LA ROSA WIRE  
CONTOURING  
HS-1295



HOW CURVED  
HS-1296



JHONSON CONTOURING  
HS-1297



HOW STRAIGHT  
HS-1298



LINGUAL ARCH  
HS-1299



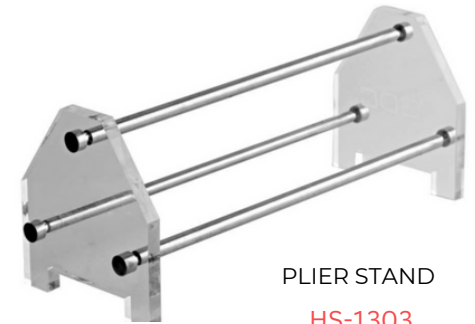
MATHIEU PLIER  
WITH RING  
HS-1300



MATHIEU PLIERS FINE  
HS-1301



NANCE  
HS-1302



PLIER STAND  
HS-1303

# ORTHODONTICS PLIERS



OPTICAL  
HS-1304



POSTERIOR BAND  
REMOVER-LONG  
HS-1305



POSTERIOR BAND  
REMOVER-SHORT  
HS-1306



RIBBON-TWEED ARCH-LONG  
HS-1307



RIBBON-TWEED  
ARCH-SHORT  
HS-1308



SEPARATING  
MODULE ANGULAR  
HS-1309



SEPARATING MODULE  
HS-1310



THREE BEAK  
HS-1311



TORQUING PLIER MALE FEMALE  
HS-1312



TORQUING PLIER WITH KEY  
HS-1313



UNIVERSAL PLIER  
HS-1314



TWEED O'BRIEN  
HS-1315



WEINGART UTILITY SLIM  
HS-1316



V BENDING PLIER  
HS-1317



WEINGART UTILITY  
HS-1318

# ORTHODONTICS PLIERS TC



ADAM'S PLIER TC

HS-1319



BIRD BEAK-LONG TC

HS-1320



BIRD BEAK-SHORT TC

HS-1321



CRIMPABLE HOOK PLACEMENT

HS-1322



BRACKET REMOVING  
CURVED TC

HS-1323



HOW CURVED TC 2MM

HS-1324



HOW CURVED TC 2MM

HS-1325



HOW STRAIGHT TC 2MM

HS-1326



POSTERIOR BAND  
REMOVER - SHORT TC

HS-1327



POSTERIOR BAND  
REMOVER-LONG TC

HS-1328



RIBBON-TWEED ARCH LONG  
PLIER TC  
HS-1329



RIBBON-TWEED ARCH  
SHORT Plier TC  
HS-1330



THREE BEAK PLIER WITH  
CUTTER TC  
HS-1331



WEINGART TC.  
HS-1332



WEINGART TC  
HS-1333



# PLASMA COATED ORTHODONTIC BLACK CUTTER



DISTAL END CUTTER

HS-1334



DISTAL END CUTTER (2)

HS-1335



HARD WIRE CUTTER

HS-1336



PIN LIGATURE CUTTER 15'

HS-1337



PIN LIGATURE CUTTER  
3200106

HS-1338

# PERIODONTAL

10



# COLUMBIA CURETTES



COLUMBIA CURETTE COLOR  
CODED #SCCC4R 4L

HS-919



COLUMBIA CURETTE COLOR  
CODED #SCCC4R 4L

HS-920



COLUMBIA CURETTE COLOR  
CODED #SCCC4R 4L

HS-921



COLUMBIA CURETTE  
STANDARD #SC2R 2L

HS-922



COLUMBIA CURETTE  
STANDARD #SC2R 2L

HS-923



COLUMBIA CURETTE COLOR  
CODED #SCCC4R 4L

HS-924

# CORN SUTURE PLIER & POCKET MARKER



CORN SUTURE PLIER 15cm  
#SPM20

HS-925



CORN SUTURE PLIER  
18cm # SP20SLEM

HS-926



CORN SUTURE PLIER  
PREMIUM #SP20

HS-927



CORN SUTURE PLIER  
STANDARD #SP20S

HS-928



CORN SUTURE PLIER  
STANDARD #SP20S

HS-929

# GRACEY CURETTE



GRACEY CURETTE #MINI  
FIVE #SAS1 2  
HS-930



GRACEY CURETTE  
PREMIUM #SG1 2  
HS-931



GRACEY CURETTE  
PREMIUM #SG3 4  
HS-932



GRACEY CURETTE  
PREMIUM #SG5 6  
HS-933



GRACEY CURETTE  
PREMIUM #SG7 8  
HS-934



GRACEY CURETTE  
PREMIUM #SG9 10  
HS-935



GRACEY CURETTE  
PREMIUM #SG11 12  
HS-936



GRACEY CURETTE  
PREMIUM #SG13 14  
HS-937



GRACEY CURETTE  
PREMIUM #SG15 16  
HS-938



GRACEY CURETTE PREMIUM  
#SG17 18  
HS-939

# GRACEY CURETTE



GRACEY CURETTE  
STANDARD #SG1 2  
HS-940



GRACEY CURETTE  
STANDARD #SG3 4  
HS-941



GRACEY CURETTE  
STANDARD #SG3 4  
HS-942



GRACEY CURETTE  
STANDARD #SG5 6  
HS-943



GRACEY CURETTE  
STANDARD #SG7 8  
HS-944



GRACEY CURETTE  
STANDARD #SG11 12  
HS-945



GRACEY CURETTE  
STANDARD #SG13 14  
HS-946



GRACEY CURETTE  
STANDARD #SG15 16  
HS-947



GRACEY CURETTE  
STANDARD #SG17 18  
HS-948

# GRACEY CURETTE COLOR CODED



GRACEY CURETTE #MINI  
FIVE #SAS3 4  
HS-949



GRACEY CURETTE #MINI  
FIVE #SAS5 6  
HS-950



GRACEY CURETTE #MINI  
FIVE #SAS7 8  
HS-951



GRACEY CURETTE #MINI  
FIVE #SAS11 12  
HS-952



GRACEY CURETTE #MINI  
FIVE #SAS13 14  
HS-953



GRACEY CURETTE C.C  
#MINI FIVE #SAS1 2  
HS-954



GRACEY CURETTE C.C  
#MINI FIVE #SAS3 4  
HS-955



GRACEY CURETTE C.C  
#MINI FIVE #SAS5 6  
HS-956



GRACEY CURETTE C.C  
#MINI FIVE #SAS7 8  
HS-957



GRACEY CURETTE C.C  
#MINI FIVE #SAS11 12  
HS-958

# GRACEY CURETTE COLOR CODED



GRACEY CURETTE C C  
#MINI FIVE #SAS13 14

HS-959



GRACEY CURETTE C C  
#MINI FIVE #SAS15 16

HS-960



GRACEY CURETTE COLOR  
CODED #SGCC3 4

HS-961



GRACEY CURETTE COLOR  
CODED #SGCC1 2

HS-962



GRACEY CURETTE COLOR  
CODED #SGCC5 6

HS-963



GRACEY CURETTE COLOR  
CODED #SGCC7 8

HS-964



GRACEY CURETTE COLOR  
CODED #SGCC9 10

HS-965



GRACEY CURETTE COLOR  
CODED #SGCC11 12

HS-966



GRACEY CURETTE COLOR  
CODED #SGCC13 14

HS-967



# LANGER CURTTES



LANGER CURETTE PREMIUM  
#SL1 2  
HS-968



LANGER CURETTE PREMIUM  
#SL3 4  
HS-969



LANGER CURETTE PREMIUM  
#SL5 6  
HS-970

# LANGER CURTTES



MC CALL CURETTE  
PREMIUM #SM11 12

HS-971



MC CALL CURETTE  
PREMIUM #SM11 12S

HS-972



MC CALL CURETTE  
PREMIUM #SM11.12A

HS-973



MC CALL CURETTE  
PREMIUM #SM13 .14

HS-974



MC CALL CURETTE  
PREMIUM #SM13 14S

HS-975



MC CALL CURETTE  
PREMIUM #SM17 18

HS-976



MC CALL CURETTE  
PREMIUM #SM19 20

HS-977

# PERIO INSTRUMENT KITS



GRACEY CURETTE PREMIUM IN  
POUCH

HS-978



SUB GINGIVAL SCALER IN POUCH

HS-979



SUPRA GINGIVAL SCALER IN  
POUC

HS-970

# PERIO PROBESS



CP12 SCREENING PROBE  
PREMIUM

HS-981



CP12 THIN WILLIAM  
PREMIUM

HS-982



GOLDMAN FOX  
WILLIAM PROBE  
PREMIUM

HS-983



GOLDMAN FOX  
PREMIUM

HS-984



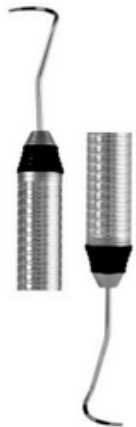
GOLDMAN FOX PROBE  
#STANDARD

HS-985



MARQUIS COLOR CODED  
PREMIUM

HS-986



NABER'S PROBE COLOR  
CODED

HS-987



NABER'S PROBE  
PREMIUM

HS-988



NABER'S PROBE  
STANDARD

HS-989



SCREENING PROBE  
#RING HANDLE

HS-990



SCREENING PROBE  
#STANDARD

HS-991



SCREENING PROBE  
PREMIUM

HS-992

# PERIO PROBESS



THIN WILLIAM  
SCREENING PROBE  
#STANDARD  
HS-993



THIN WILLIAM SCREENING  
PROBE PREMIUM  
HS-994



THIN WILLIAM PREMIUM  
PREMIUM  
HS-995



THIN WILLIAM PROBE  
#RING HANDLE  
HS-996



THIN WILLIAM PROBE  
#STANDARD  
HS-997



UNC15 SCREENING  
PROBE PREMIUM  
HS-998



UNIVERSITY OF NORTH  
CAROLINA WILLIAM PREMIUM  
HS-999



UNIVERSITY OF NORTH CAROLINA  
WILLIAM STANDARD  
HS-1000



UNIVERSITY OF NORTH  
CAROLINA #RING HANDLE  
HS-1001



UNIVERSITY OF NORTH  
CAROLINA #STANDARD  
HS-1002



UNIVERSITY OF NORTH  
CAROLINA PREMIUM  
HS-1003

# PERIODONTAL CHISEL



OCHSENBEIN  
CHISEL No. 1

HS-1004



OCHSENBEIN  
CHISEL No. 2

HS-1005



OCHSENBEIN CHISEL  
PREMIUM No. 3

HS-1006



OCHSENBEIN CHISEL  
PREMIUM No. 4

HS-1007



RHODES BACK ACTION  
PREMIUM

HS-1008

# PERIODONTAL FILES



HIRSCHFELD FILE  
PREMIUM No. 3 7

HS-1009



HIRSCHFELD FILE  
PREMIUM No. 5 11

HS-1010



HIRSCHFELD FILE  
PREMIUM No. 9 10

HS-1011



SCHLUGER  
PREMIUM #FS9 10S

HS-1012



SUGARMAN  
PREMIUM #FS1 2S

HS-1013



SUGARMAN  
PREMIUM #FS3 4S

HS-1014

# PERIODONTAL KNIVES



BUCK #KB3 4 # 6

HS-1015



BUCK #KB5 6 # 6

HS-1016



CRANE KAPLAN

HS-1017



GOLDMAN FOX PREMIUM  
#KGF8

HS-1018



GOLDMAN FOX  
PREMIUM #KGF9

HS-1019



GOLDMAN FOX  
PREMIUM #KGF11

HS-1020



KIRKLAND  
PREMIUM

HS-1021



ORBAN PREMIUM  
# KO1 2

HS-1022



ORBAN PREMIUM #  
KO12KP03A

HS-1023



# PERIODONTAL SCALERS



ANTERIOR PREMIUM  
#SN137

HS-1024



ANTERIOR SCALER  
RING HANDLE #SN137

HS-1025



ANTERIOR SCALER  
STANDARD #SN137

HS-1026



BIFID #SB4 8 #4

HS-1027



BIFID SCALER #SB4 8

HS-1029



CRANE KAPLAN  
PREMIUM #SCK6

HS-1030



CUMINE SCALER  
PREMIUM #SCM152

HS-1031



CUMINE SCALER RING  
HANDLE #SCM152

HS-1032



CUMINE SCALER  
STANDARD #SCM152

HS-1033



DERBY PERRY CHISEL  
PREMIUM

HS-1034



HOE ORBAN  
PREMIUM #SO8 9

HS-1035



HOE ORBAN PREMIUM  
#SO67

HS-1036



HOE ORBAN  
PREMIUM #SO67

HS-1037



HOE ORBAN  
STANDARD #SO8 9

HS-1038



HOE ORBAN  
STANDARD #SO7 9

HS-1039



HYGIENIST PREMIUM  
#SH6 7

HS-1040



MANIPAL SCALER  
#SM5 6

HS-1041



MANIPAL SCALER  
#SM137

HS-1042



PERIODONTAL  
SCALERS

HS-1043



POSTERIOR PREMIUM  
#NEV12

HS-1044



POSTERIOR PREMIUM  
#SN135

HS-1045



POSTERIOR SCALER  
PREMIUM #S129

HS-1046



POSTERIOR SCALER  
PREMIUM #S204S

HS-1047



POSTERIOR SCALER RING  
HANDLE #S204S

HS-1048

# PERIODONTAL SCALERS



POSTERIOR SCALER  
STANDARD #S204S

HS-1049



POSTERIOR SCALER  
STANDARD #SN135

HS-1050



REMINGTON PREMIUM  
#SRM3 4

HS-1051



S129(1)

HS-1052



SM2-3

HS-1053



SN135(2)

HS-1054



SPRINGFIELD  
PREMIUM #SSP2 3

HS-1055



SPRINGFIELD  
STANDARD #SSP2 3

HS-1056



SURFACE SCALER  
PREMIUM #MDY652

HS-1057



SURFACE SCALER RING  
HANDLE #MDY652

HS-1058



SURFACE SCALER  
STANDARD #MDY652

HS-1059



TOWNER JACQUETTE  
PREMIUM #SU15 30

HS-1060



TOWNER JACQUETTE  
RING HANDLE #SU15 30

HS-1061



TOWNER JACQUETTE  
STANDARD #SU15 30

HS-1062

# PERIOTOMES



PERIOTOME  
FLEXI THIN #PTF1

HS-1063



PERIOTOME  
FLEXI THIN  
#PTF2

HS-1064



PERIOTOME  
FLEXI THIN #PTF3

HS-1065



PERIOTOME  
FLEXI THIN  
#PTF4

HS-1066



PERIOTOME FLEXI  
THIN #PTF5

HS-1067



PERIOTOME  
FLEXI THIN  
#PTF6

HS-1068



PERIOTOME  
P1

HS-1069



PERIOTOME  
P2

HS-1070



PERIOTOME  
P3

HS-1071



PERIOTOME  
P4

HS-1072



SUB GINGIVAL  
SCALER SINGLE  
END #SCU61

HS-1073



SUB GINGIVAL  
SCALER SINGLE  
END #SEC1

HS-1074



SUB GINGIVAL  
SCALER SINGLE  
END #SEC2

HS-1075



SUB GINGIVAL  
SCALER SINGLE  
END #SF1

HS-1076



SUB GINGIVAL  
SCALER SINGLE  
END #SF2

HS-1077



SUB GINGIVAL  
SCALER SINGLE  
END #SWV1

HS-1078



SUB GINGIVAL  
SCALER SINGLE  
END #SWV2

HS-1079

# SUPRA GINGIVAL SCALER



SUPRA GINGIVAL  
SCALER #SB2

HS-1080



SUPRA GINGIVAL  
SCALER #SB3

HS-1081



SUPRA GINGIVAL  
SCALER #SB6

HS-1082



SUPRA GINGIVAL  
SCALER #SCI1

HS-1083



SUPRA GINGIVAL  
SCALER #SDP5

HS-1084



SUPRA GINGIVAL  
SCALER #SDP6

HS-1085



SUPRA GINGIVAL  
SCALER #SSP1

HS-1086



SUPRA GINGIVAL  
SCALER #SU15

HS-1087

# SURGICAL CURETTE & BONE CURETTE



BONE CURETTE  
HEMINGWAY #CH876 #3

HS-1088



BONE CURETTE  
HEMINGWAY #CH876 #4

HS-1089



BONE CURETTE  
HEMINGWAY #CH877 #3

HS-1090



BONE CURETTE  
HEMINGWAY #CH877 #4

HS-1091



BONE CURETTE  
HEMINGWAY #CH878 #3

HS-1092



BONE CURETTE  
HEMINGWAY #CH878 #4

HS-1093



BONE CURETTE  
HEMINGWAY #CH879 #4

HS-1094



SURGICAL CURETTE  
LUCAS #CL84 #3

HS-1095



SURGICAL CURETTE  
LUCAS #CL84 #4

HS-1096



SURGICAL CURETTE  
LUCAS #CL84 #6

HS-1097

# SURGICAL CURETTE & BONE CURETTE



SURGICAL CURETTE  
LUCAS #CL85 #3

HS-1098

SURGICAL CURETTE  
LUCAS #CL85 #4

HS-1099

SURGICAL CURETTE  
LUCAS #CL85 #6

HS-1100

SURGICAL CURETTE  
LUCAS #CL86 #3

HS-1101

SURGICAL CURETTE  
LUCAS #CL86 #4

HS-1102

SURGICAL CURETTE  
LUCAS #CL86 #6

HS-1103



SURGICAL CURETTE  
LUCAS #CL87 #4

HS-1104

SURGICAL CURETTE  
LUCAS #CL87 #6

HS-1105

SURGICAL CURETTE  
LUCAS #CL88 #3

HS-1106

SURGICAL CURETTE  
LUCAS #CL88 #4

HS-1107

SURGICAL CURETTE  
LUCAS #CL88 #6

HS-1108

SURGICAL CURETTE  
LUCAS #STANDARD

HS-1109



# TISSUE NIPPER & BLADE HOLDER



PAQUETTE  
BLADE HANDLE

HS-1110



TISSUE NIPPER  
HS-1111

# TUNNELLING KNIVES



TUNNELLING KNIVES 1 #6

HS-1112



TUNNELLING KNIVES 2 #6

HS-1113

# VISTA TUNNELING PROCEDURE



VISTA No. 1  
HS-1114



VISTA No. 2  
HS-1115



VISTA No. 3  
HS-1116



VISTA No. 4  
HS-1117



VISTA No. 5  
HS-1118



VISTA No. 6  
HS-1119

# Prosthodontic

11



# ANTERIOR AND POSTERIOR & ADJUSTABLE



ANTERIOR AND  
POSTERIOR DP LOWER

HS-1201



ANTERIOR AND POSTERIOR DP  
UPPER

HS-1121



Imp. Tray DNP #  
ADJUSTABLE

HS-1122



IMP. TRAY DP # ADJUSTABLE

HS-1123

# ARTICULATING PAPER HOLDER & CROWN HOLDING FORCEP



CROWN HOLDING FORCEP 1

HS-1124



CROWN HOLDING FORCEP

HS-1125



MILLER CURVED

HS-1126



MILLER STRAIGHT

HS-1127

# ARTICULATOR, PUTTY CUTTER & PLASTER SHEARS



ARTICULATOR  
HS-1128



PLASTER SHEARS  
HS-1129



PUTTY CUTTER LEFT  
HANDRESS  
HS-1130



PUTTY CUTTER RIGHT  
HANDRESS  
HS-1131

CALIPER IWANSON



CALIPER IWANSON METAL  
HS-1132



CALIPER IWANSON WAX  
HS-1133



# CEMENT SPATULA & HEIDEMANN SPATULA SPATULA



CEMENT SPATULA #CS3  
HS-1134



CEMENT SPATULA #CS4  
HS-1135



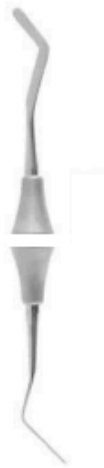
CEMENT SPATULA #CS5  
HS-1136



CEMENT SPATULA #CS5  
HS-1137



HEIDEMANN SPATULA  
#PFIHS1 #1  
HS-1138



HEIDEMANN  
SPATULA #PFIHS2 #1  
HS-1139



HEIDEMANN  
SPATULA #PFIHS3 #1  
HS-1140



HEIDEMANN SPATULA  
PREMIUM #PFIHS1 #6  
HS-1141



HEIDEMANN SPATULA  
PREMIUM #PFIHS2 #6  
HS-1142



HEIDEMANN SPATULA  
PREMIUM #PFIHS3 #6  
HS-1143

# CROWN REMOVER



CROWN OPENER  
HS-1144



CROWN REMOVER AUTOMATIC BLACK  
HS-1145



CROWN REMOVER  
AUTOMATIC STANDARD  
HS-1146



CROWN REMOVER TIP  
#CR1  
HS-1147



CROWN REMOVER TIP  
#CR2  
HS-1148



CROWN REMOVER TIP #CR3  
HS-1149



CROWN REMOVER TIP #CR4  
HS-1150



CROWN REMOVER TIP #CR5  
HS-1151



CROWN REMOVER TIP #CR6  
HS-1152



CROWN REMOVER TIP #CR7  
HS-1153



CROWN REMOVER TIP  
#CR8  
HS-1154



CROWN REMOVER TIP  
#CR9  
HS-1155



CROWN REMOVER TIP  
#CR10  
HS-1156



MANUAL PATTERN TIP  
#CRMP1  
HS-1157



MANUAL PATTERN TIP  
#CRMP2  
HS-1158



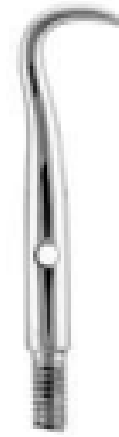
MANUAL PATTERN TIP  
#CRMP3  
HS-1159



MANUAL PATTERN  
HS-1160



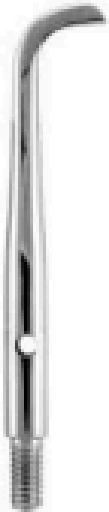
TEMPORARY CROWN  
REMOVING PLIER  
HS-1161



TURKEY PATTERN TIP  
#CRT1  
HS-1162



TURKEY PATTERN TIP  
#CRT2  
HS-1163



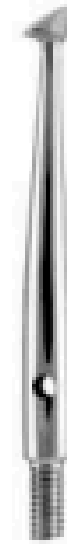
TURKEY PATTERN TIP  
#CRT3  
HS-1164



TURKEY PATTERN TIP  
#CRT4  
HS-1164



TURKEY PATTERN TIP  
#CRT5  
HS-1165



TURKEY PATTERN TIP  
#CRT6  
HS-1166



TURKEY PATTERN TIP  
#CRT8  
HS-1167



TURKEY PATTERN TIP  
#CRT9  
HS-1168



TURKEY PATTERN  
HS-1169

# GINGIVAL CORD PACKER



GINGIVAL CORD PACKER  
NON SERRATED  
#GCPR7N.  
HS-1170



GINGIVAL CORD PACKER  
NON SERRATED  
#GCPR7N  
HS-1171



GINGIVAL CORD PACKER  
NON-SERRATED  
#GCP113N.  
HS-1172



GINGIVAL CORD PACKER  
NON-SERRATED  
#GCP113N  
HS-1173



GINGIVAL CORD PACKER  
SERRATED #GCP113  
GCP113 #4  
HS-1174



GINGIVAL CORD PACKER  
SERRATED #GCP113  
GCP113 #5  
HS-1175



GINGIVAL CORD PACKER  
SERRATED #GCP113.  
HS-1176



GINGIVAL CORD  
PACKER SERRATED  
#GCP113  
HS-1177



GINGIVAL CORD  
PACKER SERRATED  
#GCPAS113  
HS-1178



GINGIVAL CORD  
PACKER SERRATED  
#GCPR7 #GCPR7  
HS-1179



GINGIVAL CORD  
PACKER SERRATED  
#GCPR7  
HS-1180

# IMPRESSION TRAY DENTULOUS NON-PERFORATED



IMPRESSION TRAY  
DENTULOUS PERFORATED  
LOWER XL (1)

HS-1181



IMPRESSION TRAY  
DENTULOUS PERFORATED  
LOWER XL (2)

HS-1182



IMPRESSION TRAY  
DENTULOUS PERFORATED  
LOWER XL (3)

HS-1183



IMPRESSION TRAY  
DENTULOUS PERFORATED  
LOWER XL (4)

HS-1184



IMPRESSION TRAY  
DENTULOUS PERFORATED  
LOWER XL (5)

HS-1185



IMPRESSION TRAY  
DENTULOUS PERFORATED  
LOWER XL (6)

HS-1186



IMPRESSION TRAY  
DENTULOUS PERFORATED  
LOWER XL (7)

HS-1187



IMPRESSION TRAY  
DENTULOUS PERFORATED  
LOWER XL

HS-1188

# IMPRESSION TRAY DENTULOUS PERFORATED



IMPRESSION TRAY  
DENTULOUS PERFORATED  
LOWER LARGE

HS-1189



IMPRESSION TRAY  
DENTULOUS PERFORATED  
LOWER MEDIUM

HS-1190



IMPRESSION TRAY  
DENTULOUS PERFORATED  
LOWER SMALL

HS-1191



IMPRESSION TRAY  
DENTULOUS PERFORATED  
LOWER XL (1)

HS-1192



IMPRESSION TRAY  
DENTULOUS PERFORATED  
LOWER XL (2)

HS-1193



IMPRESSION TRAY  
DENTULOUS PERFORATED  
LOWER XL (3)

HS-1194



IMPRESSION TRAY  
DENTULOUS PERFORATED  
LOWER XL (4)

HS-1195



IMPRESSION TRAY  
DENTULOUS PERFORATED  
LOWER XL

HS-1196

# IMPRESSION TRAY EDENTULOUS NON-PERFORATED



IMPRESSION TRAY  
EDENTULOUS NON-  
PERFORATED LOWER L

HS-1197



IMPRESSION TRAY  
EDENTULOUS NON-  
PERFORATED LOWER M

HS-1198



IMPRESSION TRAY  
EDENTULOUS NON-  
PERFORATED LOWER S

HS-1199



IMPRESSION TRAY  
EDENTULOUS NON-  
PERFORATED LOWER XL

HS-1200



IMPRESSION TRAY  
EDENTULOUS NON-  
PERFORATED UPPER L

HS-1201



IMPRESSION TRAY  
EDENTULOUS NON-  
PERFORATED UPPER M

HS-1202



IMPRESSION TRAY  
EDENTULOUS NON-  
PERFORATED UPPER S

HS-1202



IMPRESSION TRAY  
EDENTULOUS NON-  
PERFORATED UPPER XL

HS-1203



# IMPRESSION TRAY EDENTULOUS PERFORATED



IMPRESSION TRAY  
DENTULOUS PERFORATED  
LOWER XL (1)

HS-1204



IMPRESSION TRAY  
DENTULOUS PERFORATED  
LOWER XL (2)

HS-1205



IMPRESSION TRAY  
DENTULOUS PERFORATED  
LOWER XL (3)

HS-1206



IMPRESSION TRAY  
DENTULOUS PERFORATED  
LOWER XL (4)

HS-1207



IMPRESSION TRAY  
DENTULOUS PERFORATED  
LOWER XL (5)

HS-1208



IMPRESSION TRAY  
DENTULOUS PERFORATED  
LOWER XL

HS-1209



IMPRESSION TRAY  
EDENTULOUS PERFORATED  
UPPER SMALL

HS-1210



IMPRESSION TRAY  
EDENTULOUS  
PERFORATED UPPER XL

HS-1211

# IMPRESSION TRAY HALF



IMPRESSION TRAY  
DENTULOUS PERFORATED  
LOWER XL

HS-1212



IMPRESSION TRAY HALF  
EXTRA LARGE

HS-1213



IMPRESSION TRAY HALF  
LARGE ITRLDPHL3

HS-1214



IMPRESSION TRAY HALF  
MEDIUM

HS-1215



IMPRESSION TRAY HALF  
SMALL

HS-1216



IMPRESSION TRAYS HALF  
EXTRA LARGE

HS-1217



IMPRESSION TRAYS HALF  
MEDIUM

HS-1218



IMPRESSION TRAYS HALF  
SMALL RATED UPPER SMALL

HS-1219

# PKT CARVERS



CONE BURNISHER #RING  
HANDLE #PKT3

HS-1220



CONICAL BURNISHER  
#STANDARD #PKT3

HS-1221



PKT CARVER  
#PKT1

HS-1222



PKT CARVER  
#PKT2

HS-1223



PKT CARVER  
#PKT4

HS-1224

## PKT CARVERS COLOR CODED



PKT CARVER COLOR  
CODED #PKTCC1

HS-1225



PKT CARVER COLOR  
CODED #PKTCC2

HS-1226



PKT CARVER COLOR  
CODED #PKTCC4

HS-1227



PKT CARVER COLOR  
CODED #PKTCC5

HS-1228

# PROSTHODONTIC INSTRUMENT KITS



IMPRESSION TRAY DENTULOUS  
NON-PERFORATED IN POUCH

HS-1229



IMPRESSION TRAY DENTULOUS  
PERFORATED IN POUCH

HS-1230



IMPRESSION TRAY EDENTULOUS  
NON-PERFORATED IN POUCH

HS-1231



PKT CARVER COLOR CODED IN  
POUCH

HS-1233



IMPRESSION TRAY EDENTULOUS  
PERFORATED IN POUCH

HS-1232

## WAX KNIVES & SPATULA



FAHNENSTOCK LARGE #WKFL

HS-1234



FAHNENSTOCK SMALL #WKFS

HS-1236



FLEXIBLE #PS6

HS-1238



GRITMAN #OKG

HS-1240



KNIFE #OK5A

HS-1242



LESSMANN LARGE #WKLL

HS-1235



LESSMANN SMALL #WKLS

HS-1237



SPATULA CURVED #PS4

HS-1239



SPATULA STRAIGHT #PS3

HS-1241



[www.handysurgico.com](http://www.handysurgico.com)



[hello@handysurgico.com](mailto:hello@handysurgico.com)



- (852) 2304 1935
- (852) 3468 5701



- (852) 8481 5890
- (852) 5228 8138



Unit B, 12/F, Tak Wing Industrial Building, 3 Tsun Wen Road, Tuen Mun, N.T. Hong Kong



Scan me